



PONT INTERNATIONAL  
**GORDIE  
HOWE**  
INTERNATIONAL BRIDGE

# TOWER COMPLETION 2023

# Bridge Tower Folding Activity

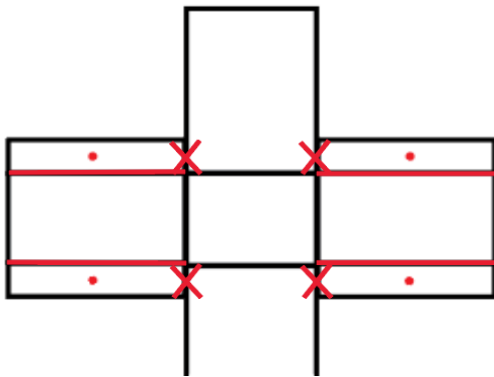
## Bridge Tower

*Red line - Fold*

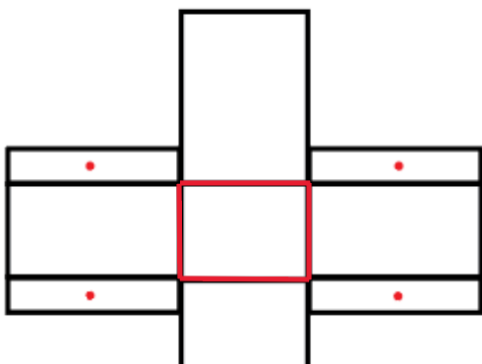
*Red X - Cut*

**Step 1:** Cut out the entire outline of the bridge tower.

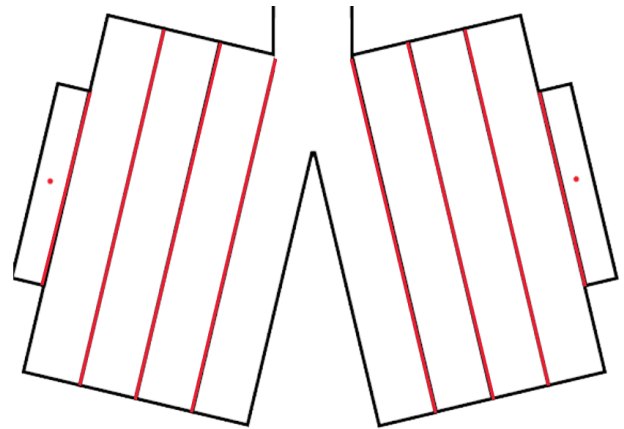
**Step 2:** Cut and fold the folding tabs.



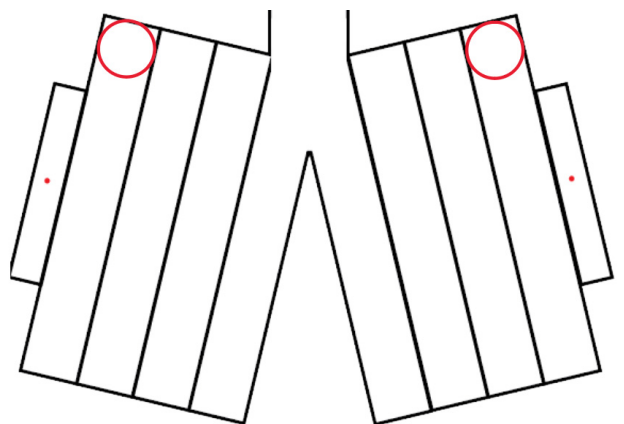
**Step 3:** Fold all remaining lines on the top area inward and attach them using glue or tape to each other using the tabs on the very edge.



**Step 4:** Form the folded tower legs into rectangles and attach them using glue or tape to each other using the tabs on the very edge.



**Step 5:** Attach the tower legs together using glue or tape (marked with circles ○).



**Step 6:** Attach the back of the top rectangle to the tower legs using tape.

# Bridge Tower Folding Activity

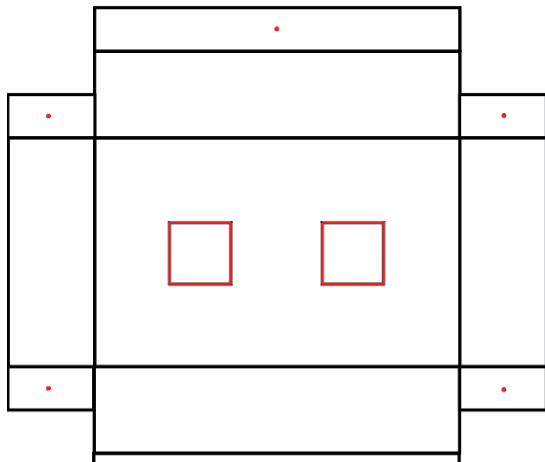
## Tower Base

*Red line - Fold*

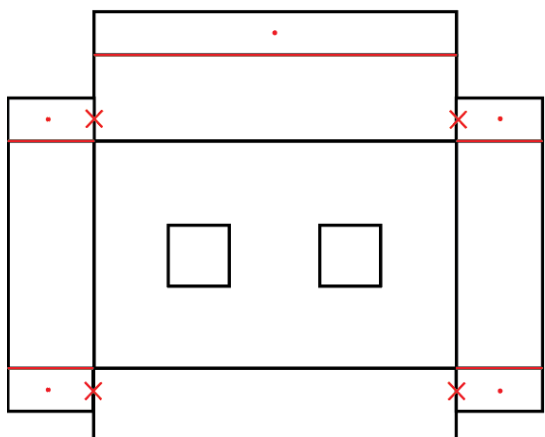
*Red X - Cut*

**Step 1:** Cut out the entire outline of the base.

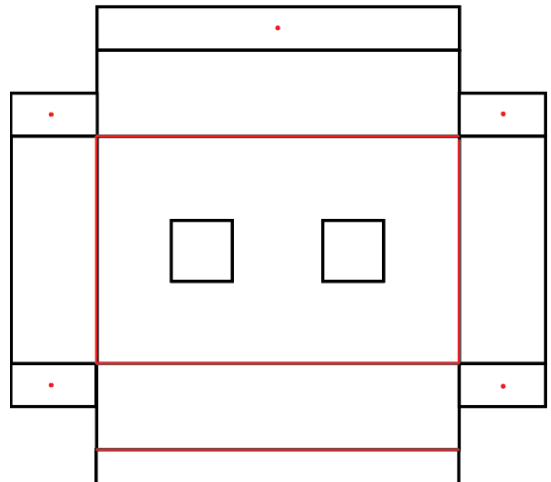
**Step 2:** Cut out the middle squares.



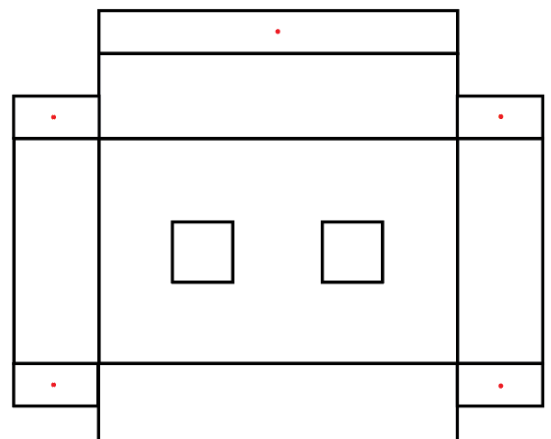
**Step 3:** Cut and fold the folding tabs.



**Step 4:** Fold all of the remaining lines.



**Step 5:** Form the shape of a rectangle and use the edge tabs to hold the sides together using glue or tape (marked with red dots).



**Step 6:** Once finished, insert the tower legs into the squares on top of the base. Use tape as needed.