



GORDIE HOWE INTERNATIONAL BRIDGE
NEW: JULY 28, 2022, START DATE
WEST END STREET
AND WEST JEFFERSON AVENUE
CLOSURES

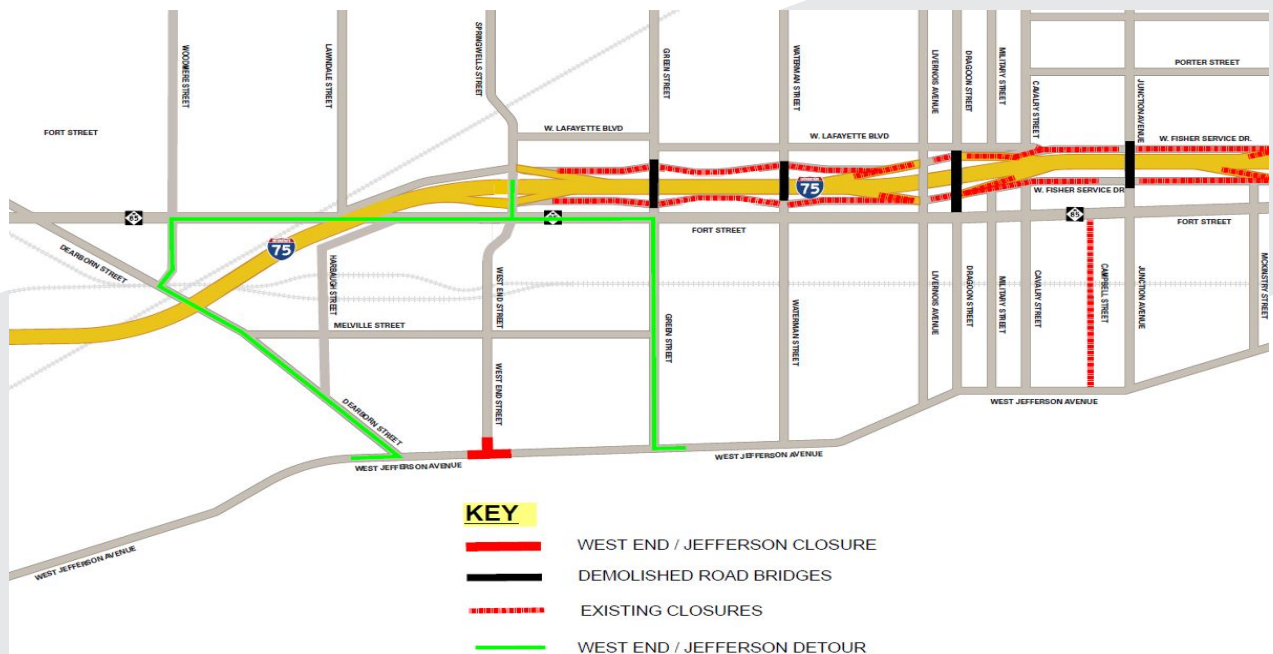
THE PROJECT

The Gordie Howe International Bridge project between Windsor, ON and Detroit, MI will help move goods and people more efficiently at this important trade gateway. Managed by Windsor-Detroit Bridge Authority (WDBA) working in collaboration with the State of Michigan, the project is being delivered through a public private partnership (P3) which will see Bridging North America design, build, finance, operate and maintain the bridge.

Bridging North America will temporarily close lanes on West End Street and West Jefferson Avenue for pavement reconstruction work as part of the Gordie Howe International Bridge project.

- Starting July 28, 2022, West Jefferson Avenue will close to eastbound traffic between Dearborn Street and Zug Island Road until August 26, 2022.
- Starting July 28, 2022, West End Street will close at West Jefferson Avenue until September 30, 2022.
- Starting August 26, 2022, West Jefferson Avenue will close to westbound traffic between Cary Street and Green Street until September 30, 2022.

WEST END STREET AND WEST JEFFERSON AVENUE CLOSURES



We appreciate your cooperation throughout this project. Every effort will be made to reduce inconvenience to drivers, residents and the business community. If you have any questions or concerns regarding traffic or these construction activities, please visit our website to find out more:

www.GordieHoweInternationalBridge.com Email: info@wdbridge.com

Call: 1-844-322-1773

Follow us on social media:     

