



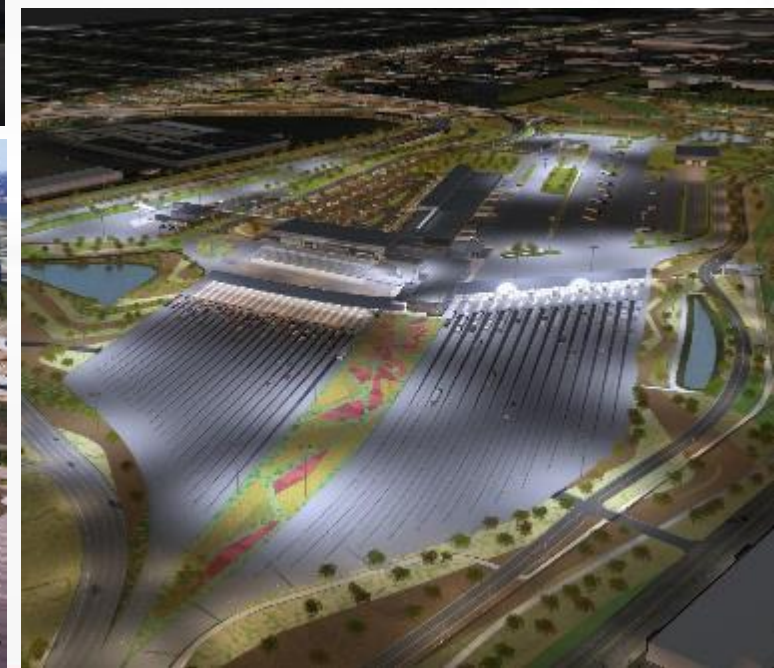
PONT INTERNATIONAL  
**GORDIE**  
**HOWE**  
INTERNATIONAL BRIDGE



# **PUBLIC INFORMATION MEETING #21**

October 6, 2022

# PROJECT COMPONENTS

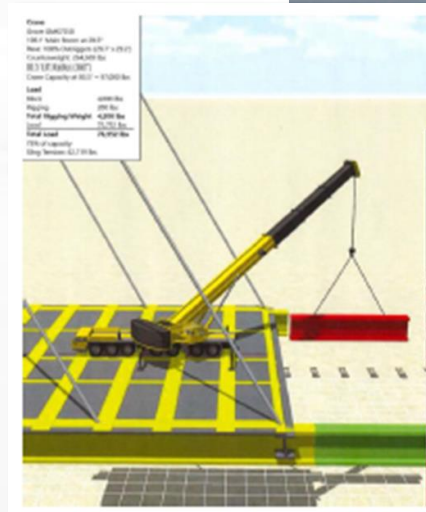


# AESTHETIC BRIDGE LIGHTING



# OVERALL BRIDGE CONSTRUCTION APPROACH

- Bridge piers located on land
- Unbalanced cantilever system; stick build
- Build back span using temporary towers while main concrete towers are being constructed
- Main span will be constructed with the pieces transported from the back span/bridge approach



# CONSTRUCTION UPDATE: BRIDGE SITES



*Canadian bridge site back span and bridge towers*



*Canadian bridge deck construction*

# CONSTRUCTION UPDATE: CANADIAN POE



Canadian POE  
Right: Canadian POE design rendering



Canadian POE, primary inspection canopy

# CONSTRUCTION UPDATE: US POE

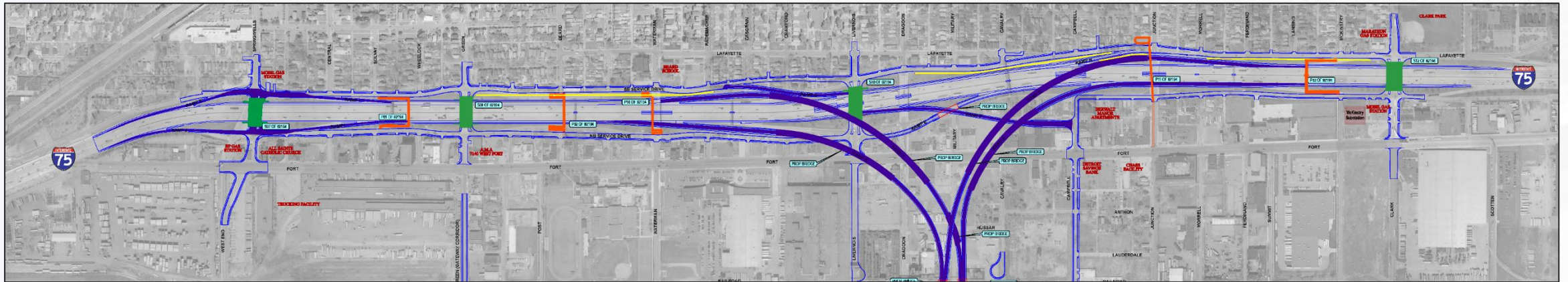


*US POE building construction*



*US POE  
Right: US POE design  
rendering*

# CONSTRUCTION UPDATE: MICHIGAN INTERCHANGE (I-75)



The future configuration of this area includes the following:

## Road Bridges

Road bridges carrying vehicular traffic over I-75 will be reconstructed at:

- Springwells Street
- Green Street
- Livernois Avenue (two-way traffic)
- Clark Street

## Access Ramps

North and southbound I-75 ramps will be accessible as follows:

### Northbound Exit Ramps:

- Springwells Street
- I-75 exit to US POE (**new**)
- Campbell Street (**new**)
- US POE exit to I-75 (**new**)

### Northbound Entrance Ramps:

- Springwells Street
- Livernois Avenue
- Clark Street

### Southbound Exit Ramps:

- Clark Street
- I-75 exit to US POE (**new**)
- US POE exit to I-75 (**new**)
- Waterman Street (**new**)
- Springwells Street

### Southbound Entrance Ramps:

- Springwells Street
- Junction Street



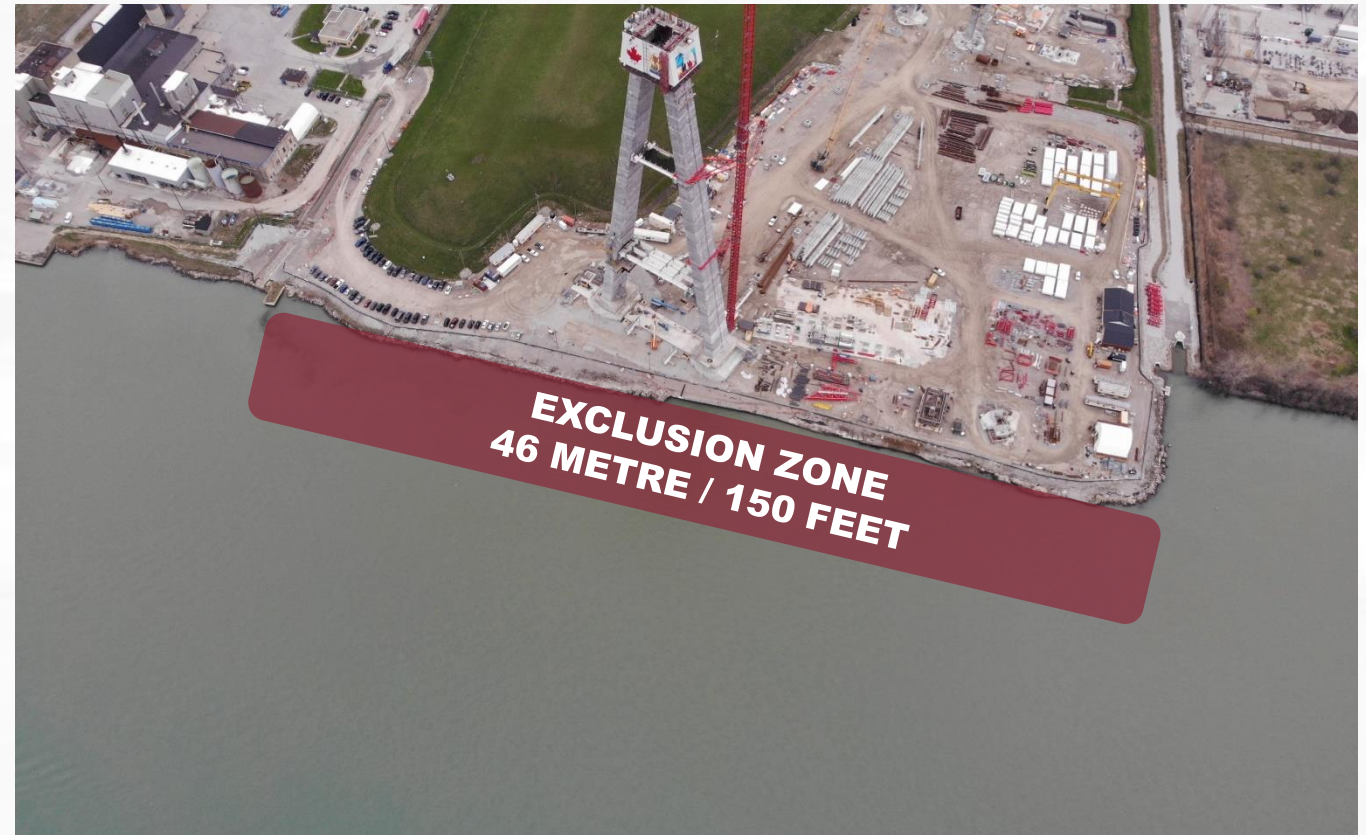
# SANDWICH STREET RECONSTRUCTION

- Three kilometres of Sandwich Street will be reconstructed, from south of the Rosedale Avenue roundabout, past Ojibway Parkway to McKee Avenue.
- Construction is anticipated to take place in a phased approach starting next year.



# DETROIT RIVER EXCLUSION ZONE

- A **46 metre/150 foot exclusion zone** (or safety buffer) is in place along the Canadian bridge construction site shoreline to reduce risk for Detroit River users.
- The exclusion zone is in accordance with the Canadian Coast Guard Navigation Warning System (NAVWARN), and Port Windsor's traffic control zones.



# COMMUNITY BENEFITS PLAN



**The Workforce Development and Participation Strategy** is geared toward engaging businesses and individuals and focuses on supporting workforce, training and pre-apprenticeship/apprenticeship opportunities.



**The Neighbourhood Infrastructure Strategy** focuses on collaborating with stakeholders and community members through consultation to develop a community investment strategy based on identified priorities.

*US Bridge Site*

# WORKFORCE DEVELOPMENT AND PARTICIPATION STRATEGY

Cumulative Totals from September 2018 – June 2022

**7135+** individuals oriented to the project in Canada and the US

**43%** are local



**365+**

apprentices/pre-apprentices assigned to the project



**240+**

co-operative learning experiences have been provided on the project



**225+** local businesses engaged on the project

# NEIGHBOURHOOD INFRASTRUCTURE STRATEGY



St. Vincent de Paul Helping Hands Friendship Centre



COI Announcment of 2022 funded organizations



ERCA Citizen Tree Survey

# SANDWICH \$1 MILLION STREET ENHANCEMENTS

- The project will invest \$1 million to further enhance the Sandwich Business Improvement Area (BIA).
- In February 2022, the project team collected feedback through a survey to help prioritize how the \$1 million is invested.
- Survey respondents were asked to rank four categories:



**Hardscaping:**  
Benches, planter  
fences, and waste  
receptacles



**Active  
transportation:** Bike  
racks, wayfinding  
signage, or bicycle  
repair stations



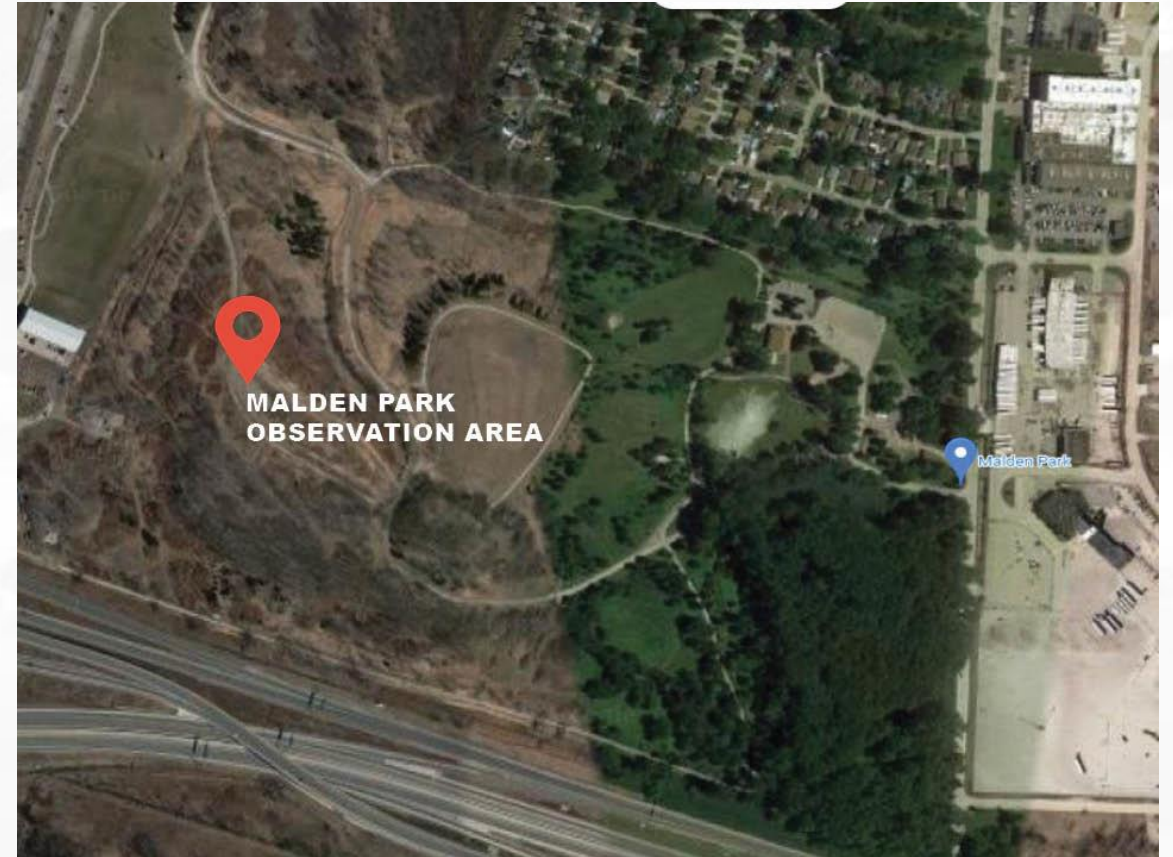
**Landscaping:**  
Potted plants or  
trees, flowering  
shrubs, planter  
boxes, tall grasses or  
other vegetation



**Gathering spaces:**  
Seating areas of  
tables and benches,  
alone or in clusters to  
allow for community  
interaction

# MALDEN PARK OBSERVATION AREA

- The Malden Park observation area will provide an attractive, safe location and a high elevation for residents, students and tourists to observe the construction of the Gordie Howe International Bridge.
- The project team received feedback on the accessibility of Malden Park Observation Area through an online survey in August.
- Results are being reviewed by the project team for incorporation into the observation area designs.



# 2022 COMMUNITY BENEFITS PLAN PROPOSALS

- A portion of the \$10 million has been set aside in Windsor and Detroit to support the expansion of existing or additional initiatives. A portion of the unallocated funding is being assigned this year.
- The project seeks feedback from the community on several proposals considered for funding
- The projects and organizations selected to receive Community Benefits funding will be announced publicly in late 2022/early 2023.





# 2022 COMMUNITY BENEFITS PROPOSALS

## CANADIAN INITIATIVES UNDER CONSIDERATION

Funding has been requested to support:

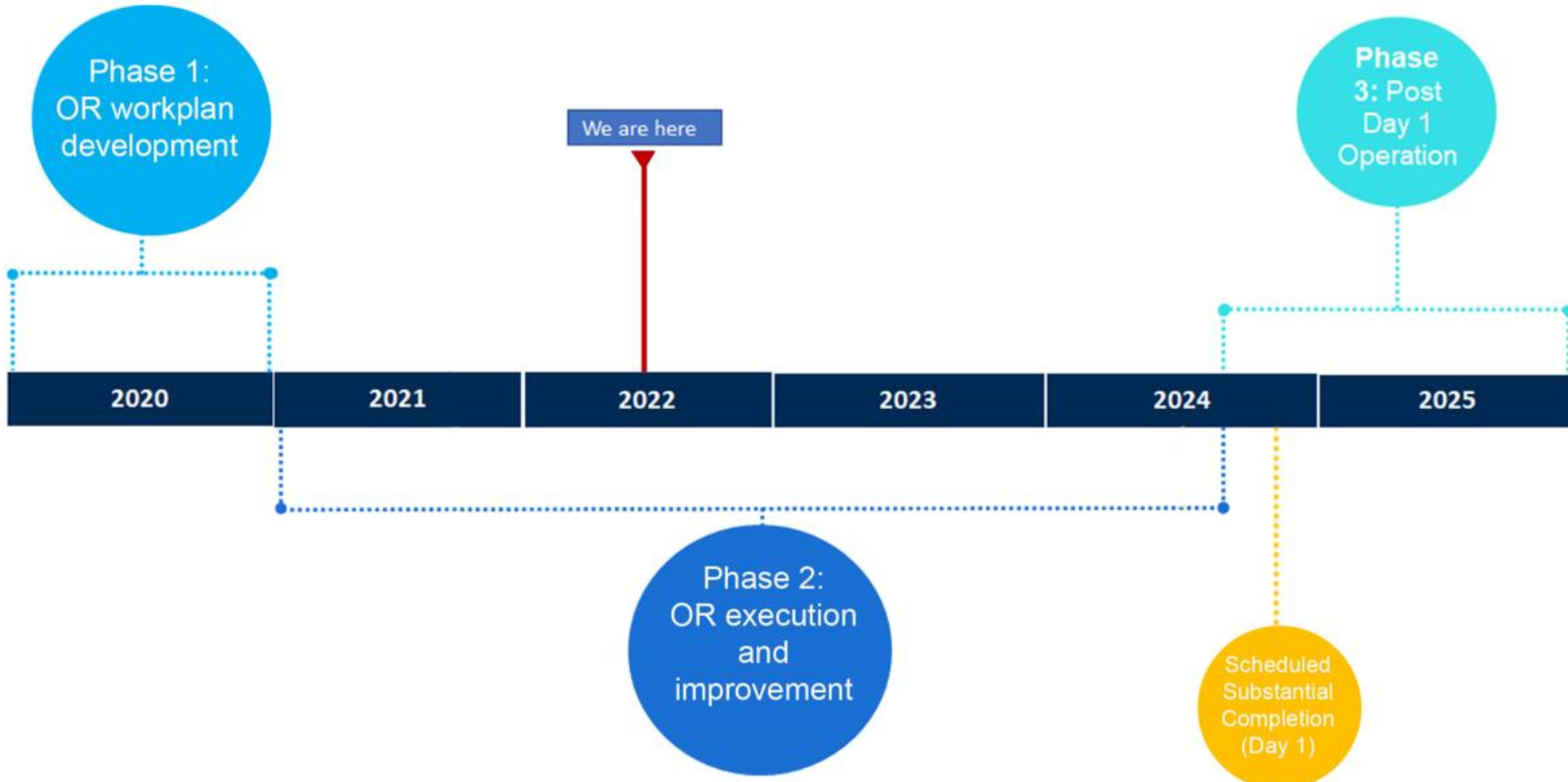
- An annual Pow Wow event that will engage local Indigenous and non-Indigenous secondary school students plus March break and summer camps for local Indigenous secondary-school students
- The restoration and relocation of an existing cultural and historical monument to Sandwich plus a commemorative plaque to mark the Francophone cultural history of the area.
- Free, community-based mental health services, addictions support education and other wellness supports for youth in west Windsor.
- Programming for young women (12-19) in west Windsor that promotes health, supportive social relationships and mentorship and other healthy lifestyle activities.
- Business marketing strategy and implementation plan for west Windsor businesses as well as investment into existing community-based events and upgrades to neighbourhood infrastructure.

# WDBA ACCESSIBILITY PLAN

- To minimize barriers for people with disabilities, and as required under the *Accessible Canada Act*, Windsor-Detroit Bridge Authority is developing an Accessibility Plan.
- WDBA received feedback from the Windsor community and WDBA staff through an online survey in August.
- Feedback from the survey is being reviewed and will be used to support further development and improvements to WDBA's Accessibility Plan.



# PREPARING FOR OPENING DAY: OPERATIONAL READINESS



# COMMUNITY OFFICES REOPENING

By Appointment starting October 4, 2022



Sandwich Community Office  
3201 Sandwich St.  
Windsor

Available appointment hours:

- Tuesdays 1:00 pm – 4:30 pm
- Thursdays 8:00 am – 12:00 pm.



Southwest Detroit Community Office  
7744 W Vernor Hwy.  
Detroit

Available appointment hours:

- Tuesdays 8:00 am – 12:00pm
- Thursdays 1:00 pm – 4:30 pm

After-business appointments may be available upon request

# QUESTION AND COMPLAINT PROCESS

The project team is committed to ensuring that communication with the public is maintained during construction so concerns are addressed as quickly as possible. Adjacent residents and businesses will receive notifications of upcoming work, regular progress updates and project contact information.

Questions and complaints can be addressed to WDBA through the following:

- Public inquiry line: 1-844-322-1773
- [Info@wdbbridge.com](mailto:Info@wdbbridge.com)
- Booking an appointment at the Sandwich or Southwest Detroit Community Office

# LEARN MORE

 [gordiehoweinternationalbridge.com](http://gordiehoweinternationalbridge.com)

 1-844-322-1773

 @gordiehowebrg

 @gordiehowebridge

 Gordie Howe Bridge

 @gordiehowebrg

 WDBA-APWD

