

CONSTRUCTION UPDATE: SPRING 2023

BRIDGE WORK



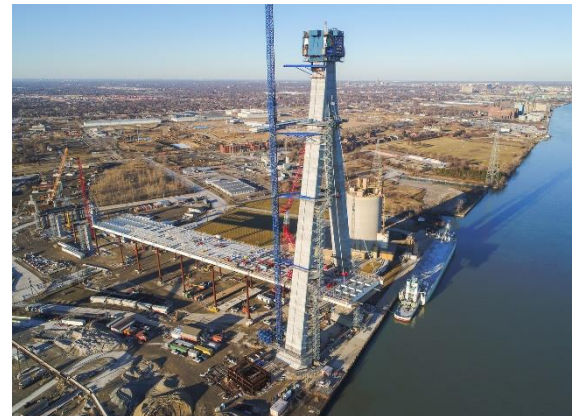
The bridge towers continue to climb as single pylons, with the Canadian and US towers both standing over 174 metres/570 feet tall. The project team has approximately 10 cement pours left on each tower until they reach their final heights of 220 metres/722 feet. This is anticipated to occur in 2023.

Anchor boxes, which secure the cables to the towers, continue to be installed and cable installation is now underway. As of March 2023, the first six cable stays have been installed on the US tower, with four cable stays in place on the Canadian tower. In total, the Gordie Howe International Bridge requires the installation of 216 stay cables, 108 on each tower.

Construction of the bridge deck over the Detroit River began in December 2022 and will continue into 2024. Construction activities include:

- assembly of crane and construction equipment on the bridge deck (complete)
- structural steel and girder installations that will make up the bridge deck
- installation of cable stays.

Learn more about cable installation and bridge construction by visiting GordieHoweInternationalBridge.com.



US bridge tower and bridge deck construction

PORTS OF ENTRY



Canadian Port of Entry construction

CANADIAN PORT OF ENTRY

At the Canadian Port of Entry (POE), construction on all 11 structures is well underway.

Underground utility installations are ongoing across multiple areas of the 53 hectares/130 acre site. The POE buildings continue to take shape with some in early construction with excavation and foundation work underway, while others have progressed further with installation of roofing, building façade, windows, drywall, and interior rough-ins for mechanical, electrical and HVAC systems.

At the primary inspection lanes, reinforcement of steel footings is underway on the canopies. The toll booths also continue to take form with structural steel installation.

Retaining wall work continues at the stormwater management ponds and at Canadian POE east gateway, where the Port of Entry will eventually connect to the Rt. Hon. Herb Gray Parkway.

US PORT OF ENTRY

Construction activities are advancing at the US Port of Entry with all 13 buildings and structures taking shape. Underground utilities, electrical and plumbing work continues at some buildings, while foundation and structural work is underway at others.

Construction traffic is using designated haul routes to minimize community impacts, traffic congestion and wear and tear on existing infrastructure while maximizing public and construction safety. Routes for construction traffic south of I-75 include M-85 (Fort St), Green St (from Fort to Jefferson Ave), Livernois Ave (from I-75 to CSX railroad), Campbell Street (from Fort Street to Jefferson Avenue), Jefferson Avenue (from Campbell to the west City limits) and any permanently closed roadways.



US Port of Entry construction

MICHIGAN INTERCHANGE (I-75) WORK



Springwells Street road bridge

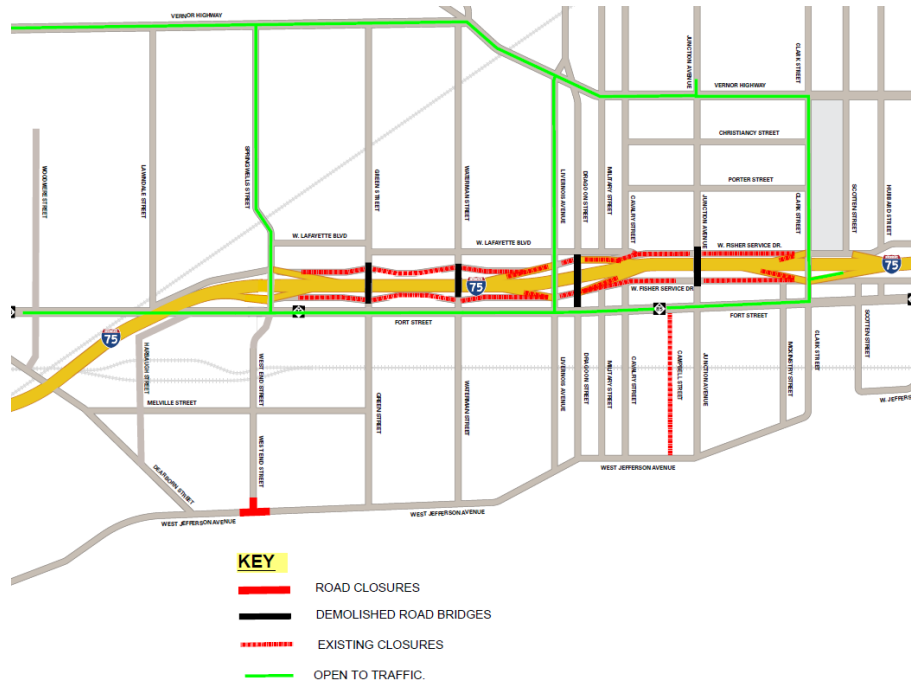
The project team has made significant progress on I-75 construction work. Clark Street, Springwells Street and Livernois Avenue road bridges are open to traffic, with the Green Street road bridge anticipated to open in 2023. The Junction Avenue road bridge has been demolished and is being reconstructed into a pedestrian bridge.

Local road improvements have started at Green Street, Livernois Avenue, Campbell Streets, Jefferson Avenue and Fort Street.

CURRENT TRAFFIC PATTERNS

The primary detour route for motorists during current construction includes:

- The use of the Livernois Avenue, Springwells Street, or Clark Street road bridges to cross over I-75.
- Travellers wishing to access I-75 northbound or southbound will be detoured to West Vernor Highway or Fort Street, depending on their directional travel needs.
- Northbound and southbound I-75 traffic has shifted onto the median to allow for ramp reconstruction and widening of I-75.
- Long-term closure of Service Drives between Central Avenue and Clark Street to support reconstruction of pedestrian bridges, ramp and I-75 widening work.



US PORT OF ENTRY AND I-75 RAMP CONSTRUCTION

Work is well underway on the ramps that will connect I-75 to the US POE. These new structures will be located between Campbell Street and Livernois Avenue and will provide an overpass above Fort Street and I-75 lanes and on/off ramps.



Construction of I-75 and US POE connector ramps



Design rendering of I-75 and US POE connector ramps

- All ramps shown in the image above are under construction at various stages.
- Girder installations on ramps A, B, C and D are nearing completion. Prep work for bridge deck construction is now taking place in some areas. This will include laying steel formwork, rebar installations and concrete pours.
- Foundational work, including construction of bridge footings and piers, is currently taking place on ramp E.
- Minimal traffic impacts are anticipated in relation to this work and may include single lane closures and short-term temporary closures.

For more information about the Gordie Howe International Bridge project visit www.GordieHoweInternationalBridge.com or call 1-844-322-1773. Follow us on Twitter at www.twitter.com/GordieHoweBrg, like us on Facebook at www.facebook.com/GordieHoweBridge and connect with us on LinkedIn at www.linkedin.com/company/wdba-apwd