

A key design feature within the Gordie Howe International Bridge project is lighting. Lighting has been designed to create a unified look across the bridge, Ports of Entry and Michigan Interchange Connection. Lighting has also been designed in accordance with regulatory requirements and in collaboration with US and Canadian agencies.

## BRIDGE LIGHTING

The lighting of the bridge is an important aesthetic component and is designed to illuminate the architectural features of the bridge towers, deck and stay cables. Designed in compliance with regulatory aviation standards, bridge lighting includes white energy-efficient, LED lights, light spill minimization features to limit impact on migratory birds and a lighting control system with dimming and sequencing options.



## BRIDGE TOWERS

The bridge towers will be illuminated from front to back and side to side using white LED lights. Lights will be equipped with optics and shielding to help limit light spillage and will have the ability to adjust as needed to accommodate for specific scenarios such as fog or peak migratory bird season.

## STAY CABLES

The stay cables will be individually illuminated from the base upward with white, precision optic LED lights. Lighting will be positioned to allow the bridge towers to absorb light, further reducing light spill into the sky. Lights will also be equipped with optics and shielding to minimize light spillage and will have the ability to adjust as needed to accommodate for specific scenarios such as fog or peak migratory bird season.

## BRIDGE DECK

The bridge deck will be lined linearly with white LED lights defining the deck edge from one end of the bridge to the other.

## LIGHTING OPTICS



## PUBLIC ART COMMISSION

Dramatic bridge lighting will be incorporated into the bridge design as an artistic feature displayed along the skyline at night. This will include a dynamic light program designed in collaboration with an artist. Artist selection for this specific commission is anticipated to occur in 2023.

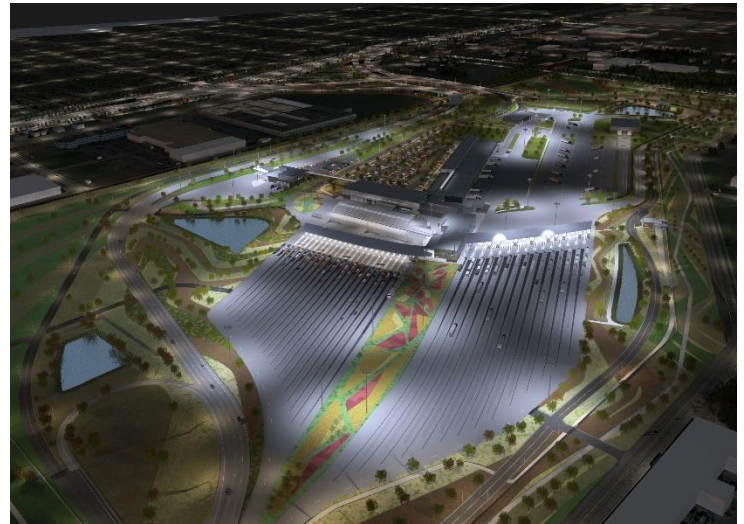
## PORTS OF ENTRY LIGHTING

The Canadian and US Ports of Entry (POE) will have functional, architectural and aesthetic lighting designed to be LEED certified, limit light spill and reduce impact to adjacent properties, sensitive natural areas and wildlife.

Lighting features on the Ports of Entry include energy efficient white LED lights and use of downlighting to minimize light pollution.



Canadian Port of Entry conceptual rendering



US Port of Entry conceptual rendering



### ARCHITECTURAL LIGHTING

Architectural lighting will be incorporated into building facades and primary inspection lanes to provide visual support for activities occurring in these areas, such as inspections and to ensure public safety.



### FUNCTIONAL LIGHTING

Functional lighting will be used to enhance visibility and improve safety of roadways and other POE areas. This includes high-mast lighting for large areas like parking lots, low-mounted lighting along pathways and perimeter lighting around the site. All functional lighting included on the project will be 'dark-sky friendly' and will emit zero up-light.



### AESTHETIC LIGHTING

Aesthetic lighting will be used throughout the POE to accent building features, visual art, flagpoles and some landscaped areas. Aesthetic lighting will use in-grade up-lights in select areas that are equipped with cut-offs to reduce glare for passing drivers and will minimize uplighting where possible.

For more information about the Gordie Howe International Bridge project visit [www.GordieHoweInternationalBridge.com](http://www.GordieHoweInternationalBridge.com) or call 1-844-322-1773. Follow us on Twitter at [www.twitter.com/GordieHoweBrg](https://www.twitter.com/GordieHoweBrg), like us on Facebook at [www.facebook.com/GordieHoweBridge](https://www.facebook.com/GordieHoweBridge) and connect with us on LinkedIn at [www.linkedin.com/company/wdba-apwd](https://www.linkedin.com/company/wdba-apwd).