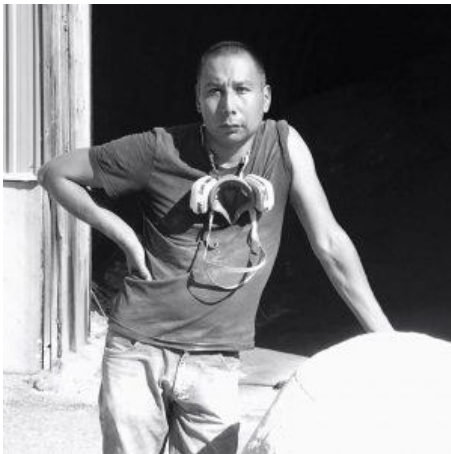


PUBLIC ART COMMISSION: INDIGENOUS SCULPTURE

Multiple art commissions have been identified for inclusion into the project as part of the Visual Art Program. This includes a stand-alone Indigenous art commission to be installed at the Canadian Port of Entry. Following an extensive selection process that began in 2018, artist Michael Belmore has been identified as the successful candidate.

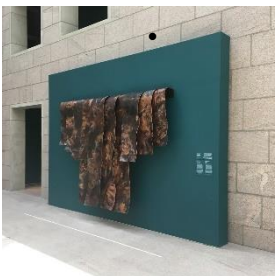


MEET THE ARTIST: MICHAEL BELMORE

Michael Belmore, an Anishinaabe artist who hails from northern Ontario is currently based in Newmarket, Ontario. Practicing for over 25 years, Belmore is an internationally recognized artist with artwork in the permanent collections of various institutions including the National Gallery of Canada, the Art Gallery of Ontario and the National Museum of the American Indian – Smithsonian Institute. His work employs a variety of materials and processes that reflect the environment, land, water, and what it is to be Anishinaabe.

ABOUT THE COMMISSION

- A 2.7-metre/nine-foot free-standing sculpture that recognizes and celebrates the history, traditions and culture of Indigenous Peoples in Canada will be created.
- The centrally located artwork will be visible to travellers as they enter and exit Canada.
- The artist’s concept has been informed through consultation with local First Nations and will be shared at a later date. Installation is anticipated in late 2023.
- The commission also includes a mentorship opportunity for an Indigenous youth to work with the artist. The mentorship aspect is being developed in consultation with the artist, Walpole Island First Nation and Caldwell First Nation.



For more information about the Gordie Howe International Bridge project visit www.GordieHoweInternationalBridge.com or call 1-844-322-1773. Follow us on Twitter at www.twitter.com/GordieHoweBrg, like us on Facebook at www.facebook.com/GordieHoweBridge and connect with us on LinkedIn at www.linkedin.com/company/wdba-apwd.