

## BRIDGE WORK

The last concrete pour for the US bridge tower is complete and it has reached its full height of 220 metres/722 feet. Crews are removing the jump form system. This work is anticipated to begin at the Canadian bridge tower in September.

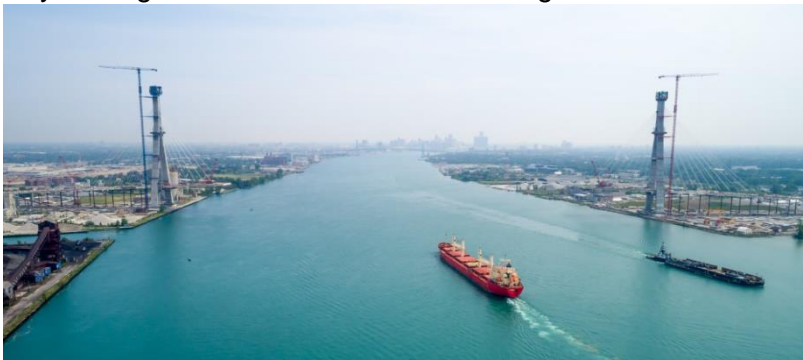
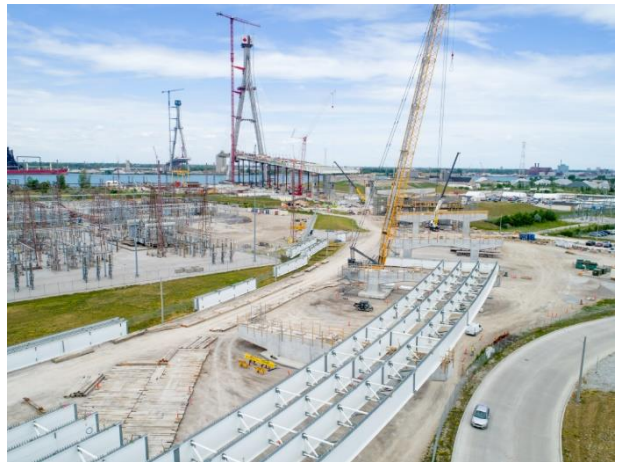
Over 100 stay cables have been installed on the US and Canadian towers of the total 216 stay cables required for the Gordie Howe International Bridge.

Construction of the road deck continues over land to connect to the Ports of Entry as well as the bridge deck work over the Detroit River. The bridge deck is approximately one-third complete with girder installation, steel erection and the placement of precast concrete panels underway.

Learn more about cable installation and bridge construction by visiting [GordieHoweInternationalBridge.com](http://GordieHoweInternationalBridge.com).



*US Bridge site construction*



*US and Canadian bridge construction (right). Canadian bridge construction (left).*

## PORTS OF ENTRY

### CANADIAN PORT OF ENTRY

At the Canadian Port of Entry (POE), construction on all 11 structures is occurring with each in different stages. Activities include roofing, masonry work, installation of equipment and underground utility installations. Paving and grading work is taking place throughout the site.

Construction of the 22 primary inspection lanes and 16 toll booths is advancing. Framing and final touchups are taking place on both canopies.

Beam erection, formwork and concrete pours are taking place on the return to US overpass bridge in the Port of Entry.



*Canadian Port of Entry construction.*



*US Port of Entry construction.*

## **US PORT OF ENTRY**

Construction activities are advancing at the US Port of Entry with all 13 buildings and structures taking shape. Roofing, masonry and structural steel installations are taking place as well as underground utility work.

Foundation work continues on inspection lane canopy footings and paving and grading work is occurring throughout the site.

Construction traffic is using designated haul routes to minimize community impacts, traffic congestion and wear and tear on existing infrastructure while maximizing public and construction safety. Routes for construction traffic south of I-75 include M-85 (Fort St), Green St (from Fort to Jefferson Ave), Livernois Ave (from I-75 to CSX railroad), Campbell Street (from Fort Street to Jefferson Avenue), Jefferson Avenue (from Campbell to the west City limits) and any permanently closed roadways.

## **MICHIGAN INTERCHANGE (I-75) WORK**

### **ROAD AND PEDESTRIAN BRIDGE CONSTRUCTION**

The Green Street road bridge reopened in August 2023 marking the completion of all four I-75 road bridges required on the project. This includes: Springwells Street, Green Street, Livernois Avenue and Clark Street road bridges.

All five pedestrian bridges are currently under construction. Activities include utility work and abutment construction. Girder installations are anticipated to begin on the Junction Avenue and Lansing Street pedestrian bridges in the coming months.



*Road and pedestrian bridge construction*

### **SIPHON CONSTRUCTION**

Siphon installation is underway along portions of I-75 to help facilitate future drainage in the area. Siphon construction continues at Military Avenue and Junction Avenue, including pipe installation, backfilling and chamber construction. Excavation work is taking place at Dagoon Street.

Siphon work is anticipated to begin at Morrell Street and Ferdinand Street over the coming months.



*I-75 to US POE ramp construction.*

### **RAMP CONSTRUCTION**

The new ramps that will connect I-75 to the US POE are taking shape. These new structures are located between Campbell Street and Livernois Avenue and will provide an overpass above Fort Street and I-75 lanes and on/off ramps. Ramp completion is anticipated for 2024.

All ramps in the image below are currently under construction.

Activities include:

- girder installation
- rebar installation and concrete deck pours
- foundational work, including construction of footings and piers.



*Design rendering of I-75 and US POE connector ramps*

## LOCAL ROAD IMPROVEMENTS

Michigan Interchange activities include associated local road improvements. These improvements include:

Reconstruction and realignment of:

- Green Street from I-75 to W. Jefferson Avenue, including a boulevard from the Norfolk Southern Railway to W. Jefferson Avenue
- Campbell Street from I-75 to W. Jefferson Avenue, including a boulevard from the Norfolk Southern Railway to W. Jefferson Avenue
- Livernois Avenue from I-75 to the dead end, with construction a cul-de-sac and conversion to 2-way traffic (from Fort Steet south).

Reconstruction and reconfiguration of the following intersections:

- West End Street and Fort Street
- West End Street and W. Jefferson Avenue (complete)
- Dearborn Street and W. Jefferson Avenue
- Clark Street and Fort Street
- Clark Street and W. Jefferson Avenue

Road resurfacing will take place on:

- East and westbound I-75 Service Drives from West End Street to Clark Street
- Fort Street from Junction Avenue to Green Street
- Cavalry Street: construction of a new cul-de-sac at the southern terminus
- W. Jefferson Avenue from Campbell Street to West End Street.

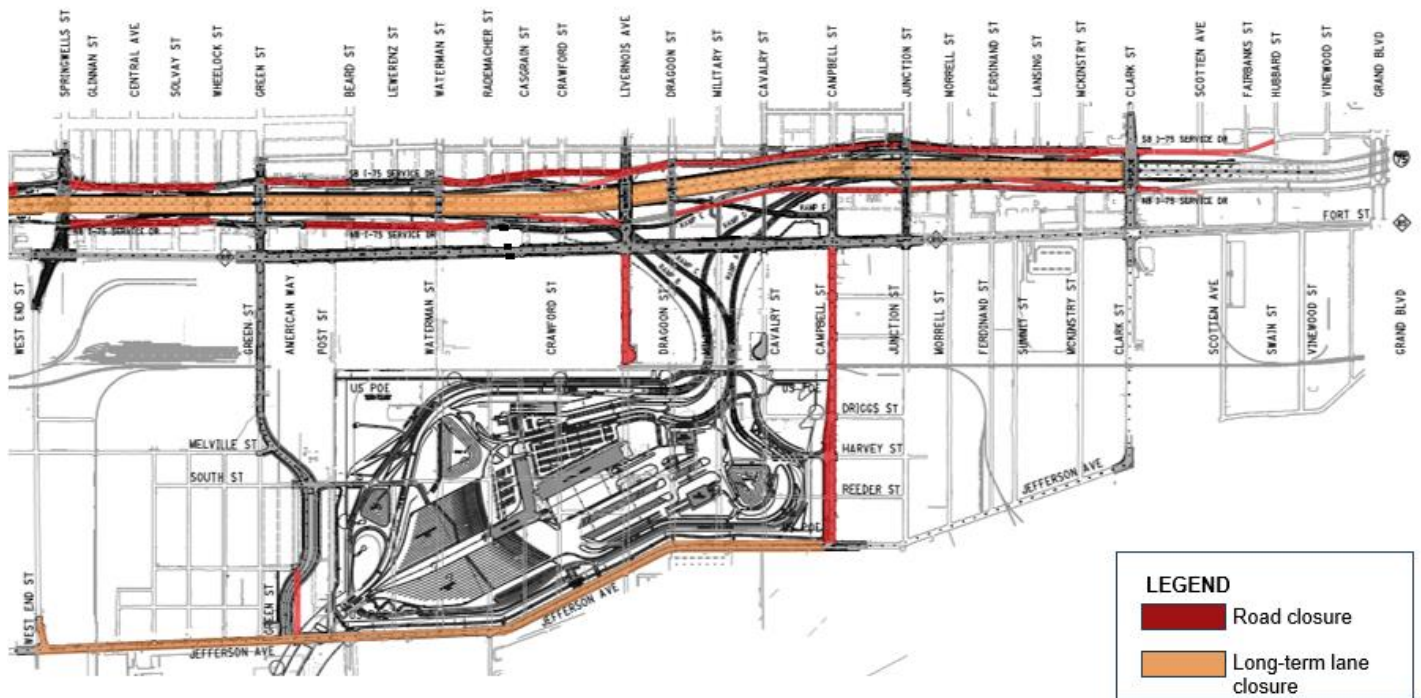


*I-75 construction.*

Work is at various stages on Jefferson Avenue, Livernois Avenue, Fort Street and Campbell Street.

## CURRENT TRAFFIC PATTERNS

- Service Drives are closed or reduced to single lanes in areas between Springwells Street and Clark Street:
- Livernois Street is open to two-way traffic between Fort Street and West Lafayette Street and one-way traffic north of West Lafayette Street.
- The primary detour route for motorists includes the use of the Springwells Street, Green Street, Livernois Avenue and Clark Street road bridges to cross over I-75.
- Travelers wishing to access I-75 northbound or southbound will detour to West Vernor Highway or Fort Street depending on directional travel needs.



Map of current I-75 traffic patterns

For more information about the Gordie Howe International Bridge project visit [www.GordieHoweInternationalBridge.com](http://www.GordieHoweInternationalBridge.com) or call 1-844-322-1773. Follow us on Twitter at [www.twitter.com/GordieHoweBrg](https://www.twitter.com/GordieHoweBrg), like us on Facebook at [www.facebook.com/GordieHoweBridge](https://www.facebook.com/GordieHoweBridge) and connect with us on LinkedIn at [www.linkedin.com/company/wdba-apwd](https://www.linkedin.com/company/wdba-apwd)