



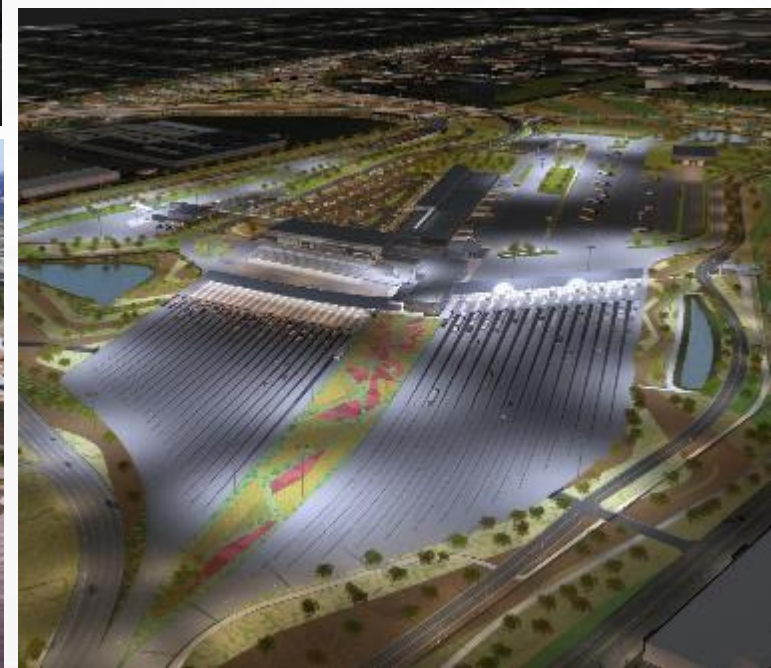
PONT INTERNATIONAL
GORDIE
HOWE
INTERNATIONAL BRIDGE



PUBLIC INFORMATION MEETING #25

September 19, 2023

PROJECT COMPONENTS



CONSTRUCTION UPDATE: BRIDGE SITES



CONSTRUCTION UPDATE: US PORT OF ENTRY



CONSTRUCTION UPDATE: CANADIAN PORT OF ENTRY



CONSTRUCTION UPDATE: MICHIGAN INTERCHANGE (I-75)



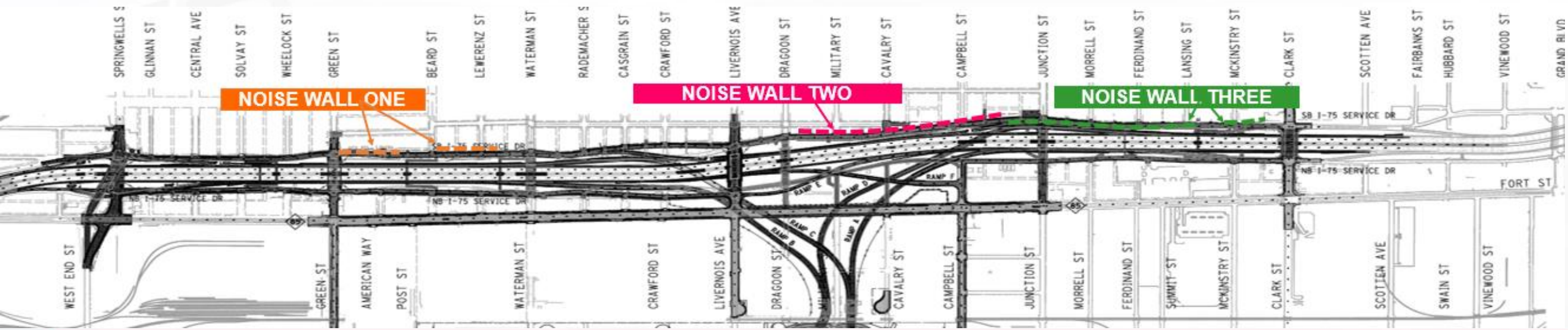
ROAD BRIDGES COMPLETE



I-75 TO US POE CONNECTING RAMPS

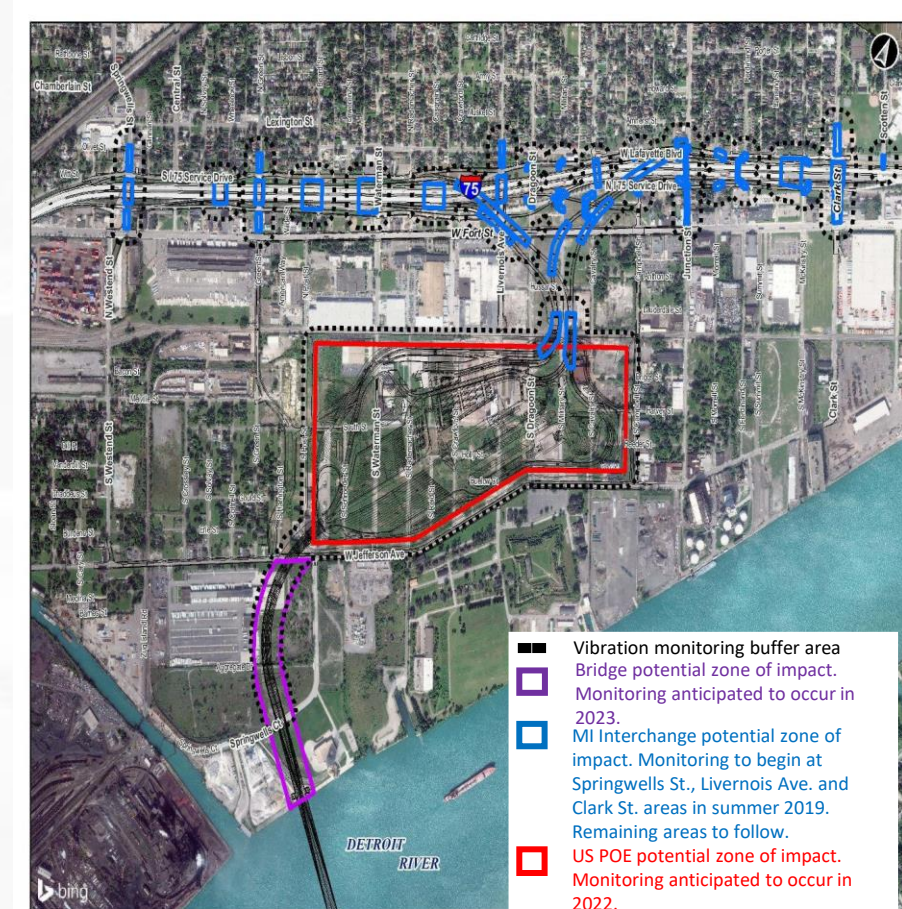


NOISE WALL CONSTRUCTION



VIBRATION MONITORING

- In some instances, construction activities may cause noise and vibration beyond the project limits.
- Pre-construction, construction and post-construction foundation surveys are available to owners of properties located within 150 feet of identified vibration zones.
- Once opted-in, BNA will coordinate a survey of the property.
- Vibration levels will be monitored throughout construction activities.
- Visit gordiehoweinternationalbridge.com or contact info@wdbridge.com for more information.



SAFETY DURING CONSTRUCTION

- **Construction zones are dangerous**
- Please **do not enter the project construction zones** unless authorized to do so.



PREPARING FOR OPENING DAY: OPERATIONAL READINESS



COMMUNITY BENEFITS PLAN



The Workforce Development and Participation Strategy is geared toward engaging businesses and individuals and focuses on supporting workforce, training and pre-apprenticeship/apprenticeship opportunities.



The Neighbourhood Infrastructure Strategy focuses on collaborating with stakeholders and community members through consultation to develop a community investment strategy based on identified priorities.

US Bridge Site

WORKFORCE DEVELOPMENT AND PARTICIPATION STRATEGY

Cumulative Totals from September 2018 – June 2023

10,150+

individuals oriented to the project in Canada and the US

42% are local



620+

apprentices/pre-apprentices assigned to the project



310+

co-operative learning experiences have been provided on the project



265+

local businesses engaged on the project

WORKFORCE DEVELOPMENT AND PARTICIPATION STRATEGY

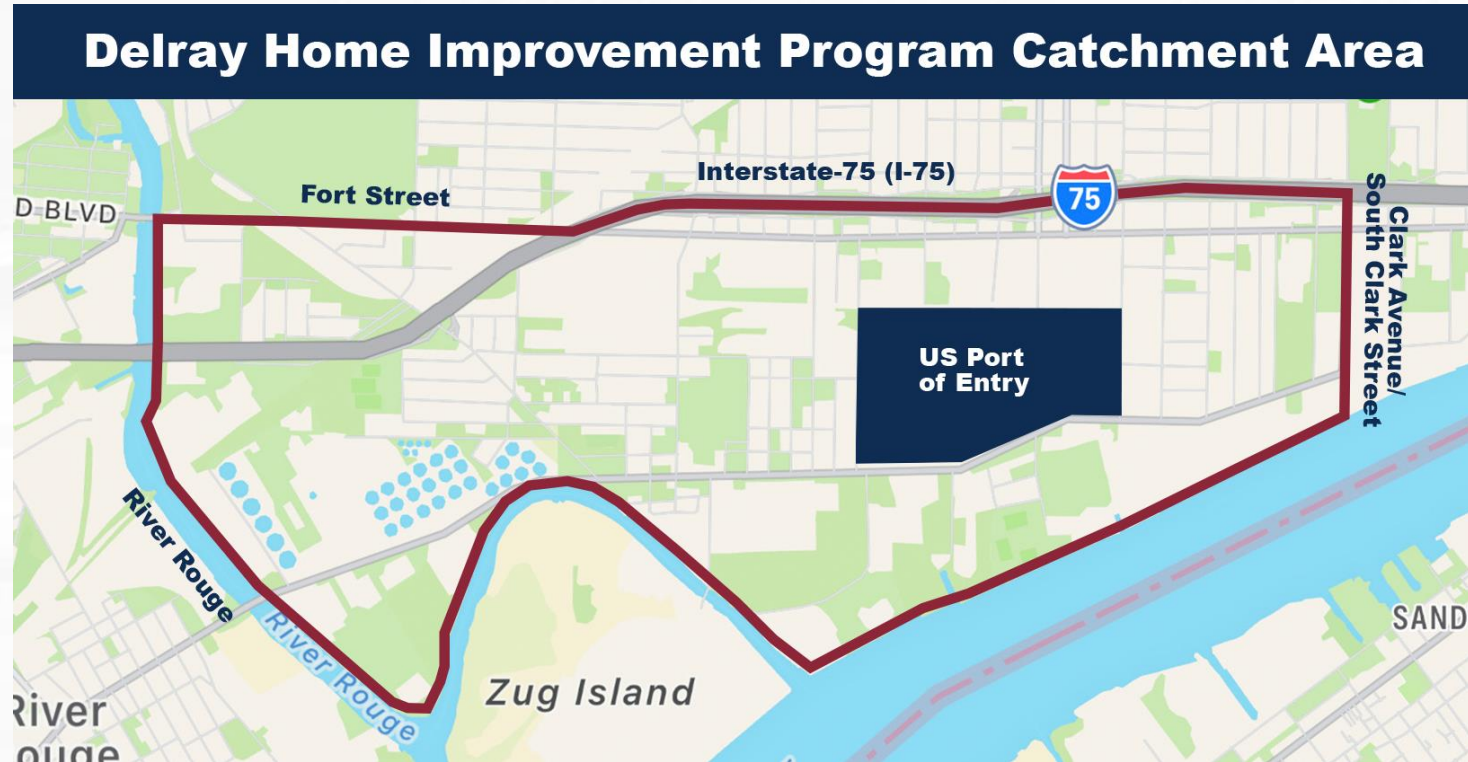


NEIGHBOURHOOD INFRASTRUCTURE STRATEGY



DELRAY HOME IMPROVEMENT PROGRAM

- Repairs offered:
 - window replacement
 - HVAC system replacement
 - insulation
 - roof repair
- Accepting applications for eligible households in the Delray community



PROGRAMMING INVESTMENTS SURVEY AND CALL FOR PROGRAMMIG PROPOSALS



Investment areas prioritized for each community:

Sandwich/west Windsor

- Community safety
- Business development
- Green initiatives
- Local history and culture
- Tourism

Delray/Southwest Detroit

- Community safety
- Business development
- Food security
- Green initiatives
- Wellness

Programming proposals are currently under review.

LOCAL COMMUNITY GROUP RECRUITMENT



RECRUITING NEW MEMBERS:

- Two-year term
- Participates in quarterly meetings
- Provides input into the implementation of Community Benefits
- Reviews funding opportunities as part of the Neighbourhood Infrastructure Strategy.

Accepting volunteer applications until 4 p.m. on Tuesday, October 17, 2023.

2022-2023 COMMUNITY BENEFITS YEAR IN REVIEW REPORT

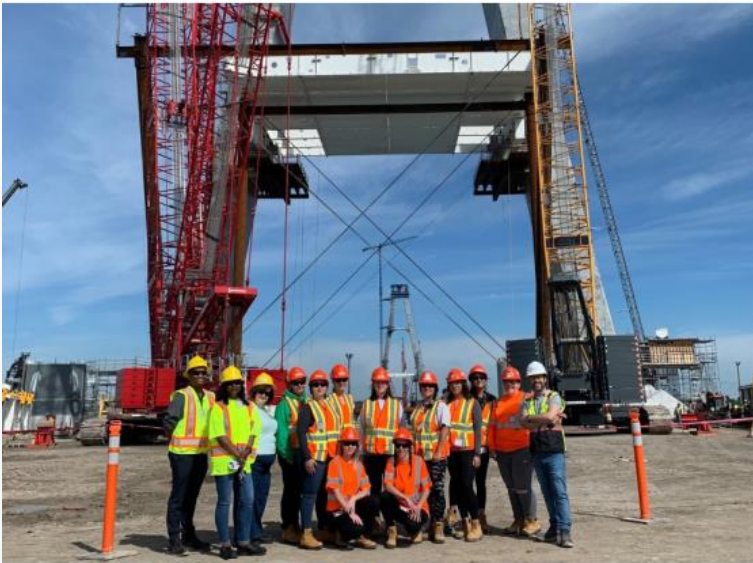
**COMMUNITY
BENEFITS**



PONT INTERNATIONAL
**GORDIE
HOWE**
INTERNATIONAL BRIDGE

**2022-2023
YEAR-IN-REVIEW REPORT**

APRIL 2022 - MARCH 2023



www.GordieHoweInternationalBridge.com

April 2022-March 2023 activities and accomplishments

GordieHoweInternationalBridge.com/community-benefits-section



WDBA ENVIRONMENTAL, SOCIAL AND GOVERNANCE (ESG) PLAN

- WDBA is committed to actively supporting the creation of a thriving and sustainable future for employees, bridge users and the communities where we operate throughout the project's life cycle.
- The ESG Plan documents the operational activities or project-related activities that connect to at least one of WDBA's four anchors of ESG. Read the Plan at GordieHoweInternationalBridge.com.



Environment



Community



Corporate Culture



Corporate Conduct

2023 BROWNFIELDS AND INFRASTRUCTURE PHOENIX AWARD



COMMUNITY OFFICE HOURS



Sandwich Community Office
3201 Sandwich St.
Windsor



Southwest Detroit Community Office
7744 W Vernor Hwy.
Detroit

Community office hours:
Tuesdays 10:00 a.m. – 4:00 p.m.
Thursdays 10:00 a.m. – 4:00 p.m.

After-business appointments may be available upon request

QUESTION AND COMPLAINT PROCESS

The project team is committed to ensuring that communication with the public is maintained during construction so concerns are addressed as quickly as possible. Adjacent residents and businesses will receive notifications of upcoming work, regular progress updates and project contact information.

Questions and complaints can be addressed to WDBA through the following:

- Public inquiry line: 1-844-322-1773
- Info@wdbbridge.com

LEARN MORE

 gordiehoweinternationalbridge.com

 1-844-322-1773

 @gordiehowebrg

 @gordiehowebridge

 Gordie Howe Bridge

 @gordiehowebrg

 WDBA-APWD

