



Spring 2024



US (left) and Canadian (right) bridge decks close to connecting.

BRIDGE SITES

The Gordie Howe International Bridge team is inching closer to a momentous milestone - the bridge deck connection. The multi-week process to connect the bridge deck is underway with completion anticipated at the end of June. Temporary braces are being installed to align the bridge. This will be followed by various steps including girder installations and concrete placement. Once connected, crews will begin to stress stay cables and install electrical, fire suppression and drainage systems, barriers, signage, lighting, deck paving, and pavement markings and complete the multi-use path.

The Gordie Howe International Bridge will include 216 stay cables – 108 connecting from each tower to the bridge and road deck, which have all been installed.

To learn more about how the bridge deck will connect visit the project website GordieHoweInternationalBridge.com.

PORTS OF ENTRY

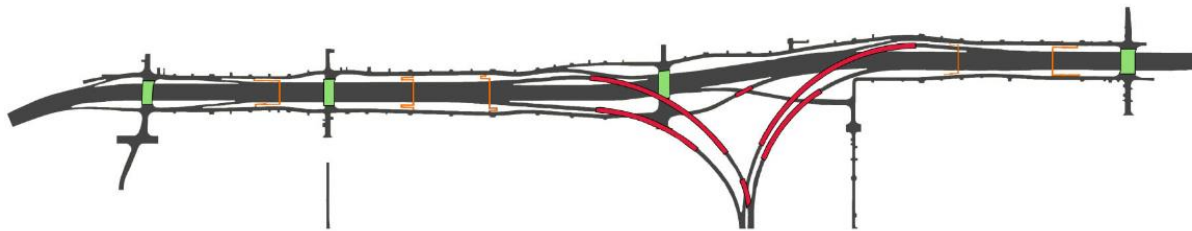
Construction continues to progress on the Canadian and US Ports of Entry (POEs). Activities taking place include:

- interior work on all buildings within the Canadian POE, and over half of the buildings at the US POE, including installation of window fixtures, heating and cooling, electrical, plumbing and flooring work
- paving and grading
- landscaping activities
- installation of structural steel for toll booth canopies is ongoing at the Canadian POE, as well as work on the primary inspection lanes on both sites.

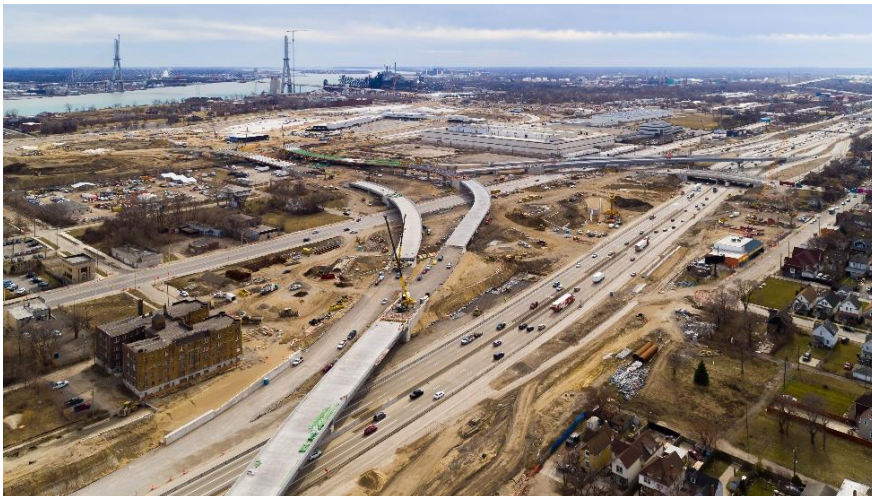


Canadian Port of Entry (left) and the US Port of Entry (right)

MICHIGAN INTERCHANGE (I-75)



Green Road bridges **Orange** Pedestrian bridges **Red** Access ramps



Michigan Interchange construction progress

Work on the 1.8 mile/3 kilometre stretch of I-75 is steadily progressing. The project team completed and reopened all four road bridges located over I-75 at Springwells Street, Green Street, Livernois Avenue and Clark Street and recently completed local road improvements to Campbell Street south of Fort Street. Crews continue on all five pedestrian bridges, with each at various stages of construction.

Crews have also finished girder placement on the ramps connecting I-75 to the US POE. The new ramps are located between Campbell Street and Livernois Avenue and provide an overpass above Fort Street and I-75 lanes as well as on/off ramps. Concrete deck pours and other finishing touches are taking place on the ramps, which are anticipated to be complete by the end of 2024.

Siphon installations are also underway along portions of I-75 to help facilitate future drainage in the area. Work continues at Morell Street, Ferdinand Street and Dagoon Street.

Noise walls (traffic sound barriers) are being constructed along three sections of southbound I-75 to help mitigate highway noise for nearby residents. Noise wall locations include:

- Green Street to Waterman Street, integrated with Beard Street and Waterman Street pedestrian bridges
- Dagoon Street to Junction Street
- Junction Street to Clark Street, integrated with the I-75 ramp and Lansing Street pedestrian bridge.

Each of the three noise walls are in various stages of construction.

Construction of the Jefferson Avenue barrier wall, an eight-foot security wall along the US Port of Entry (POE), is in progress. When complete, the barrier wall will face Jefferson Avenue and span from Green Street to Campbell Street.



Conceptual rendering(above) and location (right) of the Jefferson Avenue barrier wall

For more information about the Gordie Howe International Bridge project visit www.GordieHoweInternationalBridge.com or call 1-844-322-1773. Follow us on X at www.x.com/GordieHoweBrg, like us on Facebook at www.facebook.com/GordieHoweBridge and connect with us on LinkedIn at www.linkedin.com/company/wdba-apwd.