

## Gordie Howe International Bridge

# MOMENTUM

issued by: Windsor-Detroit Bridge Authority



PONT INTERNATIONAL  
**GORDIE  
HOWE**  
INTERNATIONAL BRIDGE

The Gordie Howe International Bridge project between Windsor, Ontario and Detroit, Michigan will help move goods and people more efficiently at this important trade gateway. Managed by Windsor-Detroit Bridge Authority (WDBA) and working in collaboration with the State of Michigan, the project is being delivered through a public-private partnership (P3) which will see Bridging North America design, build, finance, operate and maintain the bridge.

### IN THIS EDITION:

- 1000 Days of Construction
- People Profile
- Bridge Construction Approach
- Apply Now: Local Community Group
- In the Community
- Gordie Howe Bridge Project Honours
- Progress at the Canadian Port of Entry
- Kids Zone

### 1000 DAYS OF CONSTRUCTION

On July 1, 2021, the Gordie Howe International Bridge team marked 1000 days since the start of construction. Progress over the first 1000 days includes: near completion of all design work; earthworks, utility work, the start of building construction and the completion of the Perimeter Access Road at the Canadian Port of Entry; earthworks and utility work at the US Port of Entry; demolition and the start of reconstruction of three road bridges as part of the Michigan Interchange; and completion of the tower foundations and the start of construction of the bridge towers.



PONT INTERNATIONAL  
**GORDIE  
HOWE**  
INTERNATIONAL BRIDGE

1000  
DAYS OF  
CONSTRUCTION

Since the official start of construction on October 5, 2018, more than 145 local businesses in Windsor-Essex and Detroit have been engaged by Bridging North America and more than 3,900 workers, 46 per cent of which are local, have been oriented to the project. The coming years are expected to be among the busiest times of construction on the project.

To recognize the occasion, the project team developed a virtual tour of the construction sites, available on the project website. You can start at the Canadian bridge site, move through the Ports of Entry, the US bridge site, and finally the Michigan Interchange.

### CONTACT US



Have a question about the Gordie Howe International Bridge project?

Call us toll-free at **1-844-322-1773**

Email us at [info@wdbridge.com](mailto:info@wdbridge.com)

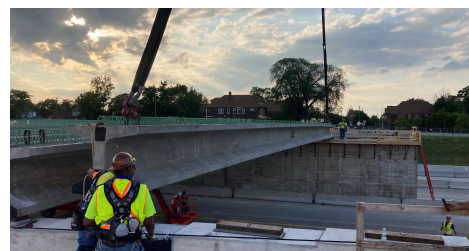
Message us through any of the project **social media accounts**.

Sandwich Community Office at **3201 Sandwich St.\***

Southwest Detroit Community Office at **7744 W Vernor Hwy.\***

**\*Community Offices are currently closed due to Covid-19.**

Read more about all project updates on [GordieHoweInternationalBridge.com](http://GordieHoweInternationalBridge.com)



# PEOPLE PROFILE

## MEET MARK BUTLER

"The Gordie Howe International Bridge project has been a significant part of my life, having been involved in the project in one iteration or the other for the past 17 years. Upon my retirement this year, I will miss the people, any of whom I would consider to be good friends, who are working so hard to make the bridge a reality. And I will hold them to their promise to get an invitation to the grand opening."

### Q. What type of work are you doing on the project?

My job description is pretty varied, however, if you were to bring it down to basics, it is all about keeping the public and our own staff informed about what is happening with this once-in-a generation infrastructure project. To do this, I help my team in building innovative and interesting content for our project website, social media presence, and our internal communications channels. I am also the primary contact with media to ensure that their questions are answered and I work on various corporate initiatives such as the Annual Report and other legislatively required corporate reporting documents.

### Q. What is the most rewarding part of working on the project?

That's a hard question. I think perhaps the most rewarding aspect has been the opportunity to work with such incredible people. The project team is talented and committed to their vision in seeing the new bridge come into service. I would be remiss in not mentioning our stakeholders – community members, unions, businesses, politicians, all who have supported our efforts.

### Q. What do you wish other people knew about the project?

Our website and social media channels are full of information demonstrating the project's progress, yet there is a small minority of people who still don't believe that this new bridge is going to happen. A famous author once said "Don't tell me the moon is shining; show me the glint of light on broken glass", which is exactly what my team is doing. We are not just saying the project is well underway, we are showing that progress in pictures and video and sound.



**MARK BUTLER**

Director of Communications, Windsor-Detroit Bridge Authority

## BRIDGE CONSTRUCTION APPROACH

The Gordie Howe International Bridge will have the longest main span of any cable-stayed bridge in North America and the fifth longest in the world with a clear span of 853 metres or 0.53 miles. The bridge will be constructed using a technique called the "unbalanced cantilever system" or "stick build." Starting from the main towers located on land, construction of the bridge will build outward towards the centre of the river, one segment at a time. Each segment consists of structural steel, pre-cast concrete deck slabs, and the cables that hold up the road deck.

The bridge will be constructed in an 'unbalanced fashion' with the back span of the bridge road deck constructed first, with temporary supports that will be removed once the cables are installed. At the edge of the road deck, a crane will place steel girders, followed by floor beams and redundancy girders to help support the middle of the bridge. Then pre-cast concrete deck slabs will be placed over top, followed by cast-in-place concrete to lock the panels together. The cables will then be lifted by the tower crane into place and secured to the tower. The process for one section is estimated to take up to twelve days. Construction will begin at the towers in both Windsor and Detroit at approximately the same time and will meet in the middle of the bridge over the Detroit River.

The materials and equipment needed for bridge construction will be transported over the back span approach to the main span where work is underway. These activities will occur at the bridge deck level, eliminating the need for any water-borne equipment. Construction on the bridge deck over the river is projected to start in 2023.



Example of a stick build construction method

## APPLY NOW: LOCAL COMMUNITY GROUP

Windsor-Detroit Bridge Authority (WDBA) and Bridging North America are accepting applications for open positions on the Local Community Group to assist in the delivery of the Gordie Howe International Bridge Community Benefits Plan. WDBA is accepting applications for volunteers until Friday, August 20, 2021, on the project website.

**One representative from each of the following is needed:**

- The Sandwich Community
- The Delray Community
- Windsor-Essex County
- The Greater Detroit Area
- Cross Border Commuter/Daily Commuter - Windsor
- Cross Border Commuter/Daily Commuter - Detroit





# IN THE COMMUNITY

## Meet-a-Machine

This year's City of Windsor Meet-a-Machine event went virtual. During the month of June, children and their families had access to activities and programming through social media. The Gordie Howe International Bridge project participated in this event by submitting a kid-friendly video. How many giraffes would it take to reach the height of the project's tower crane? Find out by watching the "Kids Ask a Tower Crane Operator Questions" video on the project YouTube channel.



## Delray Home Improvement Program Update

The Delray Home Improvement Program is now available for residents located near the US Port of Entry. This program offers access to free home repairs including roofing, windows, HVAC, and insulation. Since the launch in January, more than 40 applications have been received from the first target area. Of these, 20 properties are currently working their way through the home inspection process. The remaining applicants are in the process of completing paperwork and documentation prior to moving to the inspection and ultimately repair component of the program. Residents located within the target area of Clark Street to the east, West End Street to the west, W. Jefferson Avenue to the south and the northbound Fisher Service Drive to the north can apply for the Delray Home Improvement program through the project website.

DELRAY HOME IMPROVEMENT PROGRAM

## Walbridge Diaper Drive

During the month of June, one of Bridging North America's main US subcontractors used the project site trailers to collect thousands of diapers in an effort to support ACCESS (Arab Community Center for Economic and Social Services). Through their continued relationship with the United Way for Southeastern Michigan, Walbridge learned of the immediate need for baby diapers for ACCESS and were quick to offer their support.



## 2021 Community Organization Investment Recipients

The Gordie Howe International Bridge project team announced eight recipients of the 2021 Community Organization Investment initiative, part of the project's Community Benefits Plan. Sharing in a \$100,000 CDN fund, four Windsor and four Detroit initiatives received funding:

### Across the River to Freedom: Early Black History in Sandwich

Organization: Essex County Black Historical Research Society

### Women Can Summit Series

Organization: Border City Athletics Club

### A Bridge to Play McGivney: New Accessible Ramp

Organization: The John McGivney Children's Centre

### Sandwich Community DiverCity BBQ

Organization: Windsor Police Services

### Community Recreation Service Center

Organization: First Latin American Baptist Church

### Delray Bilingual Programs for Family Assistance

Organization: Detroit Hispanic Development Corporation

### Joyful Movement Outside

Organization: Unity in Our Community TimeBank

### Southwest Detroit Winter Carnival 2022 at Clark Park

Organization: Clark Park Coalition

Through the Community Organization Investment initiative, \$100,000 (CDN) in funding will be available each year from 2020-2024. The call for applications is expected to open in late fall of each year and funding will be released to successful applicants the following July. This initiative is one of more than 25 that is being delivered as part of the Neighbourhood Infrastructure Strategy of the Gordie Howe International Bridge Community Benefits Plan. This strategy, along with the Workforce Development and Participation Strategy, work to provide lasting and meaningful opportunities and outcomes for the communities of Sandwich and Delray.



# GORDIE HOWE BRIDGE PROJECT HONOURS



## VIRTUOSO AWARDS

PRESENTED BY IABC LONDON

At a virtual awards ceremony on June 24, 2021, Windsor-Detroit Bridge Authority received a Virtuoso Award of Merit from the International Association of Business Communicators (London chapter), in the category of COVID-19 Response & Recovery Management and Communications. The IABC adjudication committee acknowledged WDBA's efforts to understand the needs of key audiences, the use of clear and consistent messages and the outstanding use of research and analysis to inform the direction and tactics of WDBA's activities.



Windsor-Detroit Bridge Authority was recognized by the International Association of Business Communicators (Toronto chapter), with an Ovation Award of Merit in the category of COVID-19 Response & Recovery Management and Communications. This is the first year that IABC has included an award for this category to acknowledge the integral role communications plays in keeping people informed, safe and connected during the pandemic.



At its annual conference on May 18, 2021, the US-based National Association of Environmental Professionals announced that the Gordie Howe International Bridge project's Post-NEPA Environmental Compliance and Management and Compliance Program won NAEP's Environmental Excellence Award for Best Available or Innovative Technology.

# PROGRESS AT THE CANADIAN PORT OF ENTRY

Work on the building foundations for the maintenance building continues at the Canadian Port of Entry. This is the first building on site to take form. Steel framing and waterproofing of the foundation walls are well underway. At the main site, extensive foundation work is underway. Work on this building and other Port of Entry facilities will continue over the next few years. You can learn more about the construction of the buildings through a video, "9 Questions with Peter Lindsay," that is available on our website.



## KIDS ZONE

Are you up for the challenge? Try our Gordie Howe International Bridge Word Scramble below. See if you can unscramble all eight words.

The Gordie Howe International Bridge project team is available to present kid-friendly content virtually to your classroom. Whether your class is studying environmental concerns, species at risk, bridges, construction, or exploring different career paths, the Gordie Howe International Bridge project has a component to fit your curriculum. Request a virtual presentation here: [www.gordiehoweinternationalbridge.com/en/outreach-requests](http://www.gordiehoweinternationalbridge.com/en/outreach-requests).

1. diBreg \_\_\_\_\_



2. maAceir \_\_\_\_\_



3. eTres \_\_\_\_\_



4. ftSaye \_\_\_\_\_



5. tnitoCnsruc \_\_\_\_\_



6. dnaaaC \_\_\_\_\_



7. mymtinuCo \_\_\_\_\_



8. ordGei wHeo \_\_\_\_\_



1. Bridge  
2. America  
3. Trees  
4. Safety  
5. Construction  
6. Canada  
7. Community  
8. Gordie Howe