

## Gordie Howe International Bridge

# MOMENTUM

issued by: Windsor-Detroit Bridge Authority



PONT INTERNATIONAL  
**GORDIE  
HOWE**  
INTERNATIONAL BRIDGE

The Gordie Howe International Bridge project between Windsor, Ontario and Detroit, Michigan will help move goods and people more efficiently at this important trade gateway. Managed by Windsor-Detroit Bridge Authority (WDBA) and working in collaboration with the State of Michigan, the project is being delivered through a public-private partnership (P3) which will see Bridging North America design, build, finance, operate and maintain the bridge.

### IN THIS EDITION:

- Design Selected for Jefferson-Facing Barrier Wall
- People Profile
- Welcoming Travellers Through Art
- New Photo Galleries
- In the Community
- New Watermains in Southwest Detroit
- Foundations Laid at the Canadian Port of Entry
- Kids Zone

### DESIGN SELECTED FOR JEFFERSON-FACING BARRIER WALL

An aesthetic design has been selected for the Jefferson-facing barrier wall that will be constructed as part of the Gordie Howe International Bridge project's US Port of Entry (POE). The Jefferson wall is an opaque, 8-foot high, non-climbable security wall that will be located within the 85-100 foot-wide landscaped perimeter of the US POE. This green space will include native pollinator-positive plantings and a public multi-use path that will connect Campbell and Green Streets.



Aesthetic treatment that pays tribute to Historic Fort Wayne's unique star fort structure.

### CONTACT US



Have a question about the Gordie Howe International Bridge project?

Call us toll-free at **1-844-322-1773**

Email us at [info@wdbridge.com](mailto:info@wdbridge.com)

Message us through any of the project **social media accounts**.

Sandwich Community Office at **3201 Sandwich St.\***

Southwest Detroit Community Office at **7744 W Vernor Hwy.\***

**\*Community Offices are currently closed due to Covid-19.**

Read more about all project updates on [GordieHoweInternationalBridge.com](http://GordieHoweInternationalBridge.com)

"WDBA is committed to involving our host communities of Sandwich and Delray both during the construction and operation phases of the Gordie Howe International Bridge project," says Bryce Phillips, CEO of Windsor-Detroit Bridge Authority (WDBA). "The design selected for the Jefferson-facing barrier wall is an example of how the community consultation is influencing the design process."

Learn more about the wall and its design by watching the video on our YouTube channel and reading the spotlight story on our website.



# PEOPLE PROFILE

## MEET THAISE MOTA

Thaise is a Bridge Design Coordinator for Bridging North America (BNA) in Canada. Following graduation from Carleton University in Ottawa with a Master in Engineering Degree, she moved to Windsor to work on the Gordie Howe International Bridge project in 2019.

### Q. What type of work are you doing on the project?

At the moment, my main role on the project is the technical coordination of the permanent multidisciplinary components and temporary works of the main bridge and to propose improvements to design packages when necessary, to support the construction team and minimize potential conflicts.

### Q. What is the most rewarding part of working on the project?

To have my work appreciated and recognized, and to see the final product being raised from the ground. It's rewarding to have the opportunity to participate in the construction of such a magnificent structure which will have a crucial role in the development of the community and the economy of the region.

### Q. What do you wish other people knew about the project?

Not only will the bridge be instrumental for the economy, but also a wonderful feature for the city landscapes and it will make the communities very proud. The project is being delivered by a group of very competent professionals who are doing their best as well as caring about the environment.



**THAISE MOTA**

Bridge Design Coordinator, Bridging North America

## WELCOMING TRAVELLERS THROUGH ART

Providing a welcoming experience for travellers using the Gordie Howe International Bridge is a priority for the project's design team. To help achieve this sense of welcome, art will be incorporated into various project components. Following a call for artists in 2018, Sara Graham was selected to complete an artistic façade for the Energy Complex at the Canadian Port of Entry. This building will be seen most prominently by travellers as they leave Canada, and to a lesser extent, by those entering the inspection lanes for processing. Sara's current art practice is rooted in drawing and mapping, and she expects to apply those approaches to the façade under development. She was drawn to the project due to the idea of people moving through the space.



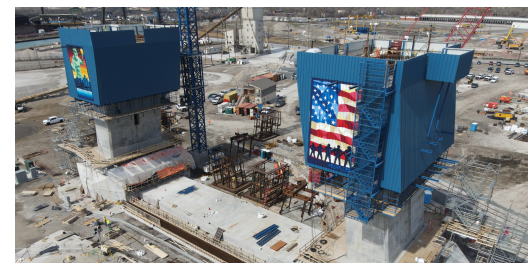
"I'm curious about our relationship to place and space, and how it shifts and morphs depending on our individual movement and speed through the environment," said Sara. "I'm particularly interested in providing a new perspective on an existing landscape."

As the art will be integrated into concrete panels as part of the building's exterior, Sara will use natural light to create shadow play on some of the artistic elements, as well as integrating colour as a way to draw viewers from a distance. A public meeting was held in March to allow members of the public to meet Sara and share feedback for her consideration. The art will be unveiled at a later date. Sara originally hails from southern Ontario and is currently based in Port Moody, British Columbia. Her work has been exhibited across North America and she has completed several public art commissions in Canada. Sara holds a BFA from the Nova Scotia College of Art and Design and an MFA from the University of Guelph.



## NEW PHOTO GALLERIES

Progress continues on the Gordie Howe International Bridge project. New galleries of the Canadian Bridge site, Canadian Port of Entry, and US Bridge site, US Port of Entry, and Michigan interchange have been posted on [GordieHoweInternationalBridge.com](http://GordieHoweInternationalBridge.com) and shared on the project social media accounts. Check out recent drone footage from the project sites on our YouTube channel for an aerial view.



# IN THE COMMUNITY

## Southwest Detroit Plants a Greener Tomorrow

250 trees found homes in Southwest Detroit where residents participated in a drive-thru tree giveaway on April 10, 2021, at Most Holy Redeemer Church. Hosted in partnership with the **Greening of Detroit**, this tree giveaway was funded as part of the Gordie Howe International Bridge project Community Benefits Plan. Native tree species were available, including American Hornbeam, Black Gum, Princeton Elm, Shumard Oak, and Carolina Silverbell. In advance of the event, Greening of Detroit hosted an online learning session about the selection of the right tree, planting, and care. Instructions were provided to all tree adoptees the day of the event. The project team has also partnered with Essex Region Conservation Authority (ERCA) to support neighbourhood green improvements in the Sandwich community. These will include the planting of large stock trees in parks and schools within the Sandwich. This initiative will also include neighbourhood-level engagement and education about trees, environmental cleanups, and garden maintenance. It is anticipated that the tree planting activities in Windsor will begin in fall 2021.



## Maritime Community Project Update

The Detroit River is an important shipping channel and keeping the Maritime Community informed is a priority for the project. The project team hosted a virtual project update for commercial shippers, shipping associations and other Maritime organizations and agencies on April 14, 2021. Over 25 Maritime representatives attended the meeting and heard the latest on the bridge construction method and schedule, ongoing coordination with the US and Canadian Coast Guards and Windsor Port Authority, and emergency response plans. To date, these meetings have been held annually and may increase in frequency as construction moves over the waterway in 2023.



## Business Development and Support

To help west Windsor and Southwest Detroit businesses and entrepreneurs take advantage of opportunities relating to the construction of the Gordie Howe International Bridge, the project launched the Business Development Program funded by through the Community Benefits Plan. Running through 2024, the program offers free support services via the WindsorEssex Small Business Centre, Downtown Windsor Business Accelerator in partnership with Baker Tilly Live, and Southwest Detroit Business Association.



## Business Development and Discovery Workshops

The Accelerator hosts workshops for established businesses in Sandwich and for individuals who want to start a business in the area. Workshops emphasize the economic opportunity that the construction of the bridge will provide. After the workshops, wrap-around services are provided.

## Women-led Business Development and Discovery Workshops

The Accelerator provides programming for women interested in starting a business in the Sandwich community. The project leverages the audience and network that the Accelerator has developed over the past seven years through the Windsor Women Accelerate Networking Programs, coupled with marketing efforts to reach new participants in this demographic. To lead this project, the Accelerator has engaged a group of six women entrepreneurs that are part of the Accelerator.

## Bridge To Prosperity

A business development program run by the Southwest Detroit Business Association provides planning and development support to Southwest Detroit contractors, residents, small businesses, and start-ups.

Learn more and get involved in the Business Development programs by visiting our website.

## NEW WATERMAINS IN SOUTHWEST DETROIT

Residents and businesses in Southwest Detroit will soon benefit from new watermain being installed as part of the work to reconstruct the I-75 Service Drives. This construction is required to accommodate the new access ramps from I-75 and the US Port of Entry.



## FOUNDATIONS LAID AT THE CANADIAN PORT OF ENTRY

Work on the building foundations for the Energy and Maintenance building has officially started at the Canadian Port of Entry. This is the first building on site to begin taking form. In March, the building's footings were excavated which allowed Bridging North America crews to start placing rebar and pour concrete as work on the exterior footings, interior footings, and the foundation wall for the building began. Work on this building and other Port of Entry facilities will continue over the next few years.



## KIDS ZONE

An excavator and a loader are just two examples of construction equipment used on the Gordie Howe International Bridge project. Colour the pictures below, snap a photo, and tag us on Instagram at @GordieHoweBrg to show off your work. Visit the Kid Construction Zone on our website for other fun activities.

