



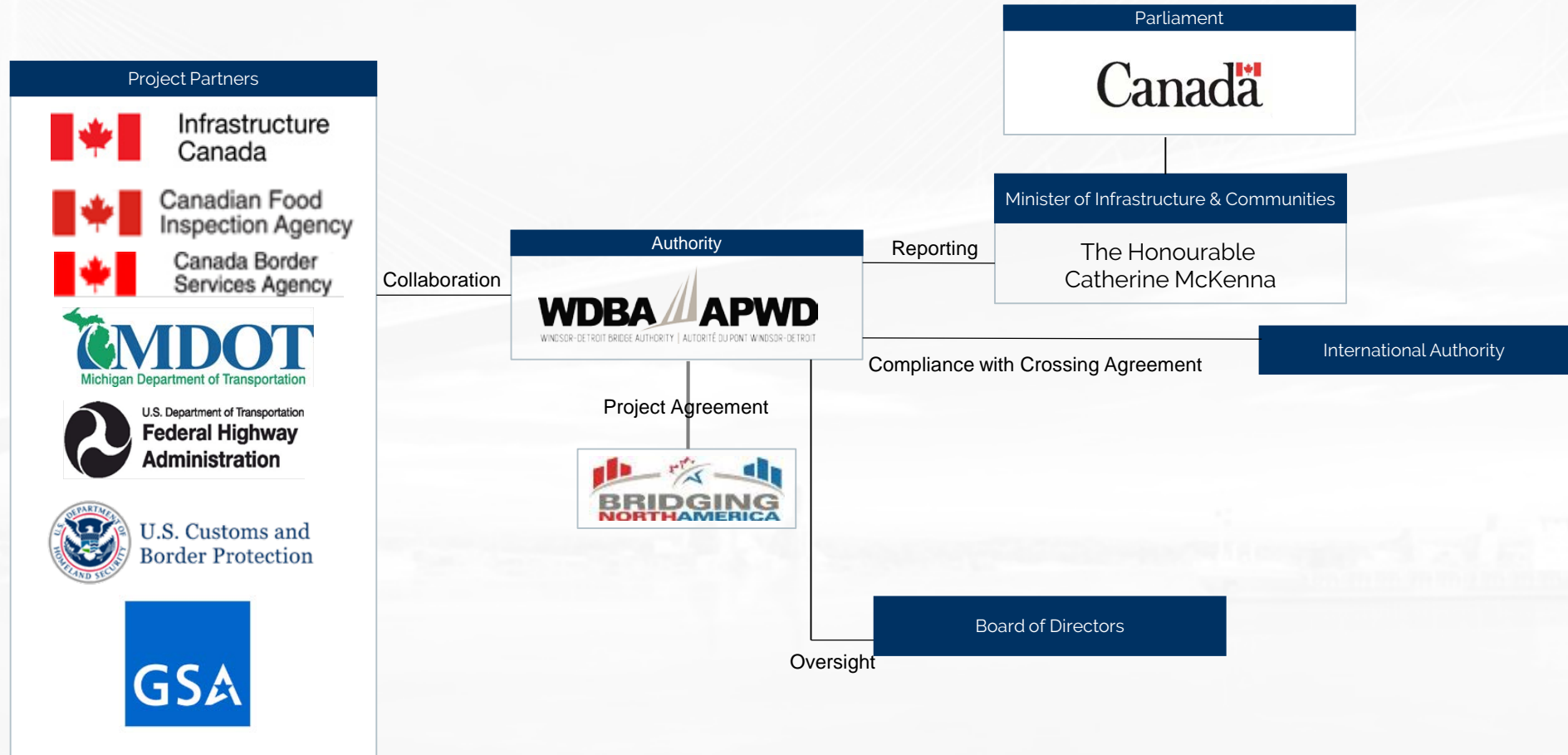
PONT INTERNATIONAL
GORDIE
HOWE
INTERNATIONAL BRIDGE

PUBLIC INFORMATION MEETING #11

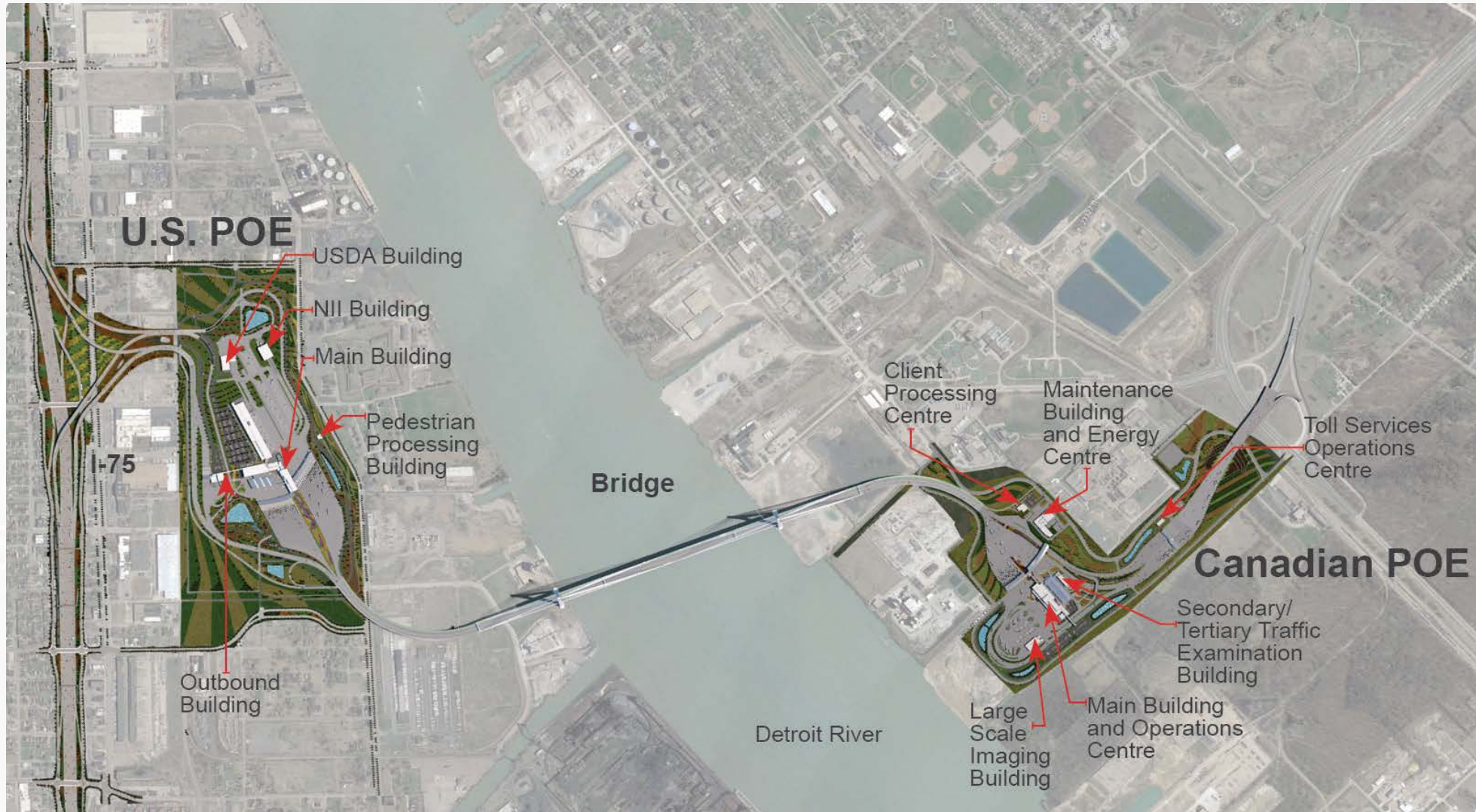
December 9, 2019



ORGANIZATIONAL STRUCTURE



PROJECT COMPONENTS



THE BRIDGE |

6 lanes – 3 in each direction

2.5 kilometres / 1.5 miles

Clear span of 853 metres / 0.53 miles

Multi-use path for pedestrians and

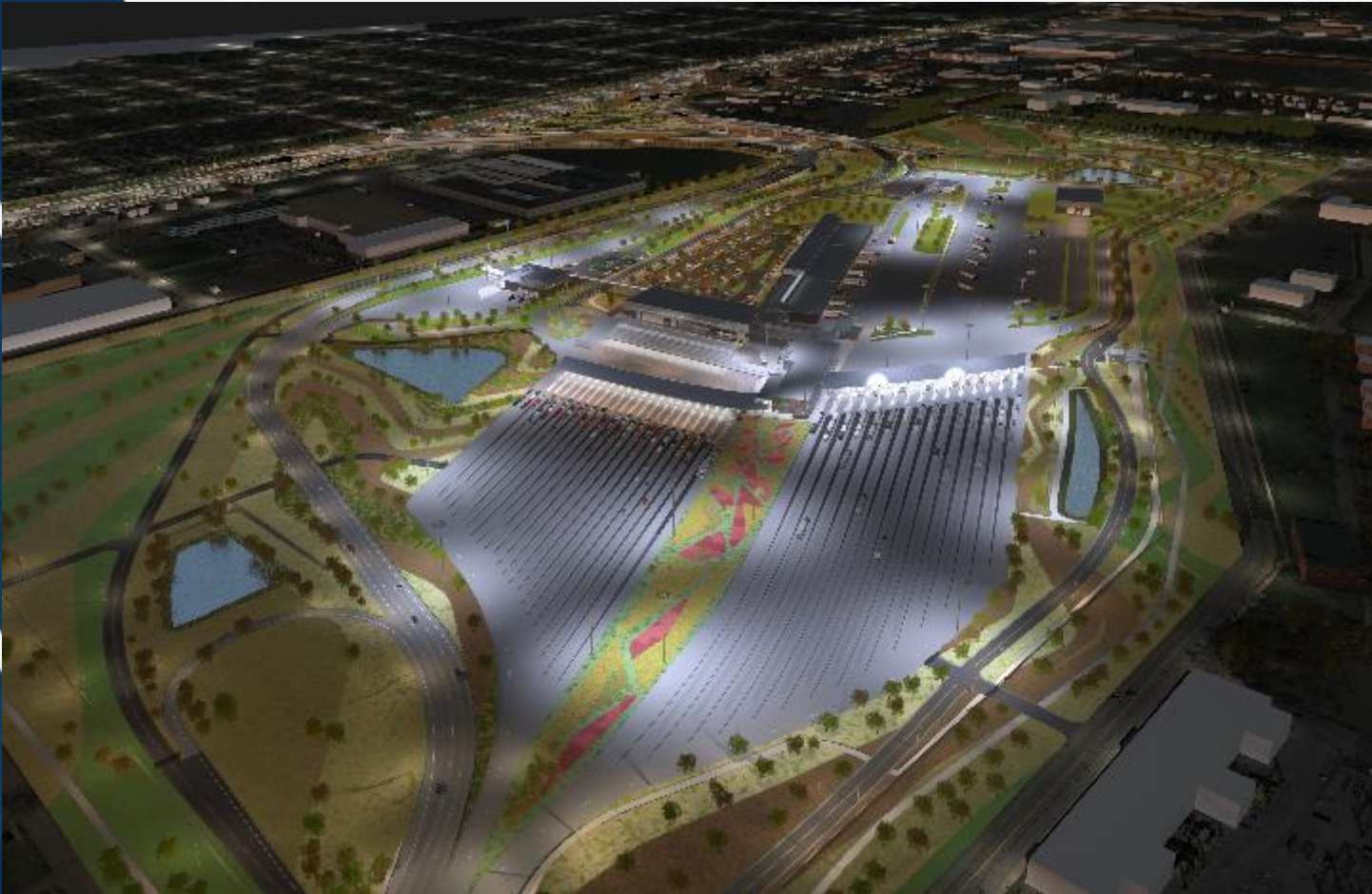
cyclists 3.6 metres / 11.8 feet wide



CANADIAN PORT OF ENTRY



- Size: approx. 53 hectare / 130 acres
- Inbound border inspection
- Outbound inspection facilities
- 16 toll collection facilities
- Maintenance facility and parking
- 24 primary inspection booths
- Extensive landscaping



US PORT OF ENTRY

Size: approx. 68 hectare / 167 acres
US inbound border inspection
US outbound inspection facilities
Commercial exit control booths
Parking
36 primary inspection booths
Extensive landscaping



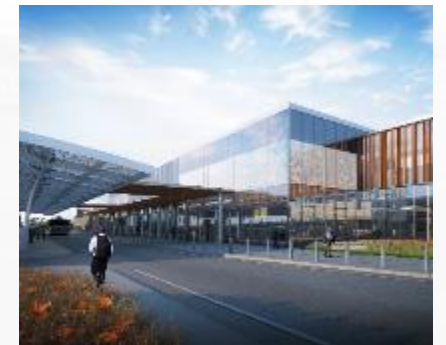
THE MICHIGAN INTERCHANGE

- 3 kilometres / 1.8 miles of I-75 and interchange ramps
- 4 new crossing road bridges
- 5 new pedestrian bridges
- 4 long connecting ramp bridges
- Local road improvements

BUILDING ELEGANCE THROUGH AESTHETICS: PROJECT GOALS

The following project goals define the desired outcome to be achieved through the project's aesthetic design:

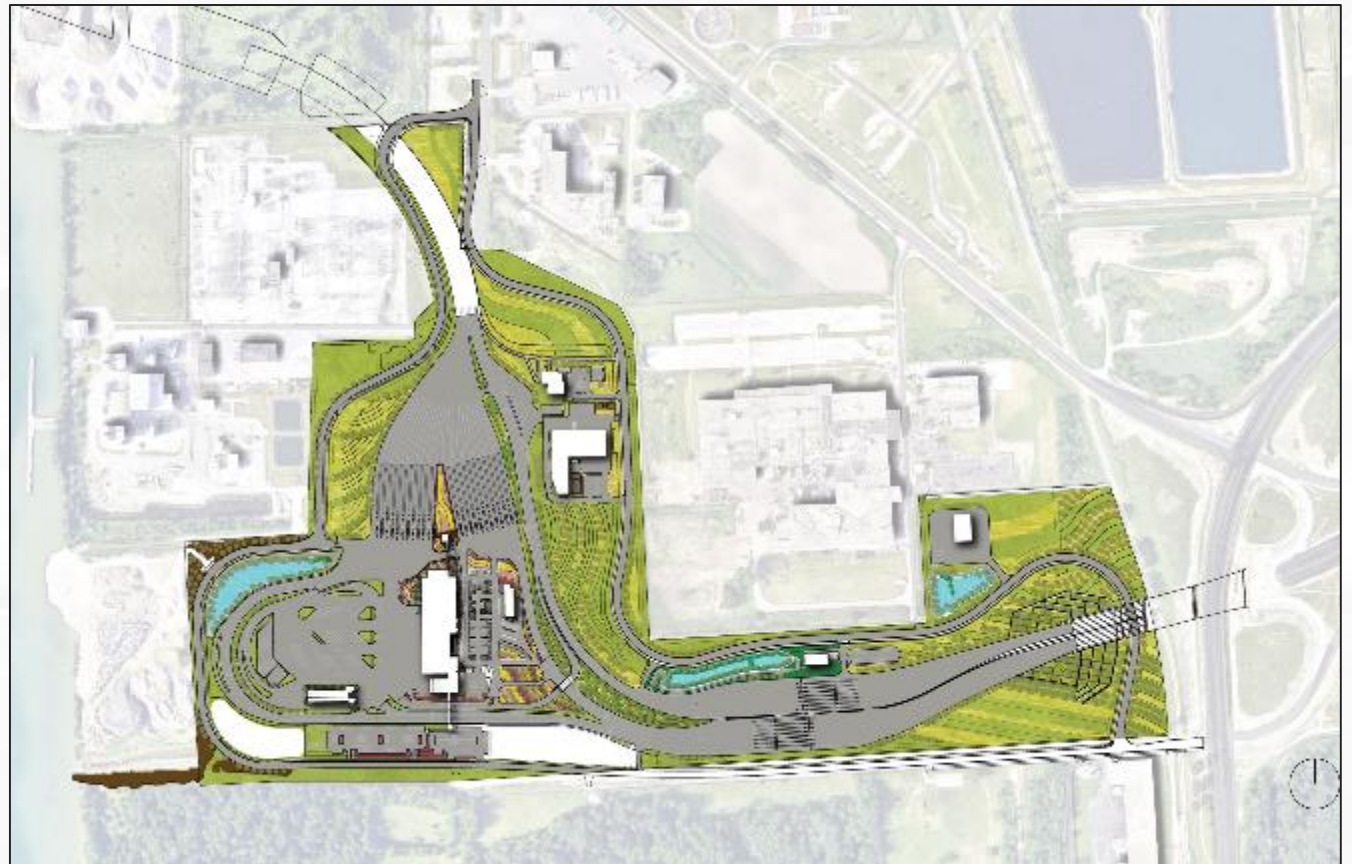
- An **impressive** and **inspiring** new gateway symbol for Canada and United States
- A **distinctive design** that reinforces its unique Windsor/Detroit context
- A bridge design that achieves a **high level of aesthetic quality**, at a distance and up close, by day and by night
- Port of Entry architecture and landscape design that showcases **functionality, design excellence, sustainability** and **barrier-free accessibility**.



CANADIAN LANDSCAPING PLAN

The landscape masterplan is one component that provides an inspiring new gateway experience with a design planting concept of ***Landscapes of Passage***, bringing continuity between the two Ports of Entry.

The landscape design of the Canadian and US Ports of Entry emphasize and articulate the movement of circulation patterns throughout the site including vehicle acceleration, deceleration, stopping and the slower speeds of bicyclists and pedestrians.



Conceptual rendering: Canadian POE Overall Landscape Plan

EAST GATEWAY LANDSCAPE

The East Gateway has been identified as an enhanced zone at the Canadian Port of Entry.

The open space will include:

- A raised plateau bordering the roadway in and out of the Canadian Port of Entry
- Vegetation arranged in linear forms to evoke French settlement and agricultural patterns from early settlements in Upper and Lower Canada
- Corten steel to divide mass plantings which are consistent with other planting compositions on the Canadian and US Ports of Entry
- An integrated entry feature sign
- In-grade uplights



LANDSCAPING DESIGN CONCEPTS

The landscape design strategy includes a native and non-invasive Carolinian plant palette to be utilized throughout the Canadian and US Ports of Entry based on security and screening requirements, space, seasonal wet and dry regimes, and gateways.

Typologies will include:

- Field landscape
- Roadside landscape
- Highlight landscape
- Perimeter landscape
- Stormwater landscape



CONSTRUCTION SCHEDULE

	2018	2019	2020	2021	2022	2023	2024
Project Start-up	█						
Design	██████████						
Construction	██████████	██████████	██████████	██████████	██████████	██████████	██████████
Bridge		██████████	██████████	██████████	██████████	██████████	██████████
Canadian POE		██████████	██████████	██████████	██████████	██████████	██████████
US POE		██████████	██████████	██████████	██████████	██████████	██████████
MI Interchange		██████████	██████████	██████████	██████████	██████████	██████████
Turnover and Commissioning						██████████	██████████

- Estimated construction duration 74 months
- 70% of construction hours will occur between 2021 – 2023
- It is anticipated that the Gordie Howe International Bridge will open to traffic by late 2024

CONSTRUCTION LOOK AHEAD

Upcoming Activities for Winter 2020/Spring 2020



Design continues: Advancing design from 60% to construction ready



Survey work continues: Crews review property lines, site details, verify conditions



Utility surveys and relocations



Fence installation: chain-link and construction fencing to be installed at US POE and bridge parcels



Seawall investigation and enhancement activities



Production drilled shaft foundation work



US POE road closures



Wick drain installation, surcharge fill placement and monitoring



Sewer work near US POE: Rehabilitating existing lines near and within the POE and I-75 Interchange



I-75 Interchange Phase 1 work: Utility relocation, demolition and reconstruction of three road bridges

BRIDGE SITE WORKS

Construction of the tower foundations for the main bridge are underway on both the Canadian and US bridge sites.

- The foundations for each tower are composed of a total of 18, 36-metre drilled shafts; 12 for the main tower footing and six for the backspan.
- Canadian site progress:
 - 10 shafts poured between north and south footings
 - Work has commenced on the backspan
- US site progress:
 - Seawall enhancements are in progress to prepare for drilled shaft work
 - One shaft poured on the south footing
- Once concrete in each shaft is cured, specialty testing will be undertaken.
- Installation of the Post Tensioning System in the main tower footings will start in January 2020.



CANADIAN PORT OF ENTRY WORK

Preparatory activities undertaken by WDBA to help BNA expedite work at the Canadian Port of Entry site are nearing completion.

- The four-kilometre Perimeter Access Road has been completed.
- Transmission line cable installations and terminations are tested and complete. Energization for the relocated Hydro One lines are anticipated to be complete in December 2019.

BNA work underway includes:

- 24/6 wick drain installation. Approximately 65,000 wick drains have been installed of a total 150,000.
- Surcharge fill placement activities began in November 2019, with 200 truck loads of aggregate being delivered daily.



US PORT OF ENTRY WORK

BNA work is well underway at the US Port of Entry.

- Major earthworks and placement of wick drains and surcharge fill began in November 2019 to accelerate the settlement of soils to expedite construction and limit long-term settlement. 105,000 wick drains will be installed.
- Construction of temporary stormwater management facilities is ongoing to help manage site water run-off.
- Utility relocation continues including work with: DTE, ITC, Comcast, AT&T, Sprint/Nextel.



MICHIGAN INTERCHANGE WORK

Approximately 1.8 miles of I-75 between Springwells Street and Clark Street require modifications to accommodate the ramps connecting to the US Port of Entry (POE). Phase One of these works started in fall 2019 and is anticipated to be complete in fall 2020.

Work includes:

- Road bridge crossings over I-75 at Springwells Street, Livernois Avenue, and Clark Street to be removed and rebuilt along with a new pedestrian bridge at Solvay Street.
- Demolition occurred December 6-9, 2019.



COMMUNITY BENEFITS PLAN



The Workforce Development and Participation Strategy is geared toward engaging businesses and focuses on supporting workforce, training and pre-apprenticeship/apprenticeship opportunities



The Neighbourhood Infrastructure Strategy focuses on collaborating with stakeholders and community members through consultation to develop a community investment strategy based on identified priorities.

COMMUNITY BENEFITS PLAN UPDATE

Since the launch of the Community Benefits Plan in June 2019, the project team has been actively preparing to implement initiatives.

The following has occurred over summer and fall 2019:

- Meetings, webinars and correspondence with delivery partners to inform implementation plans for specific initiatives.
- Development of frameworks and schedules to support the implementation of specific initiatives.
- Implementation of initiatives within the Neighbourhood Infrastructure Strategy and Workforce Development and Participation Strategy scheduled for 2019 has begun or is expected to begin before the end of the year.



LOCAL COMMUNITY GROUP

- The Local Community Group includes 16 members representing a variety of stakeholder perspectives in the communities of Delray and Sandwich and Windsor-Essex County and the Greater Detroit Area.
- The recruitment process for the Local Community Group is now complete with all positions being filled.
- Members of the Local Community Group will provide input into the implementation of initiatives within the Community Benefits Plan by providing feedback and making recommendations.
- Quarterly meetings will be held with the first occurring in early December 2019.



COMMUNITY ORGANIZATION INVESTMENT

The Gordie Howe International Bridge team is now accepting applications to be considered for funding through the 2020 Community Organization Investment initiative.

An **annual \$50,000 investment allowance per country** will be made available between 2020 and 2024. Requests for funding can range from **\$1,000 - \$25,000**.

Applications will be considered for funding if:

- The organization(s) applying is **located in or provides services to the host communities** of Sandwich/west Windsor or Delray/Southwest Detroit neighbourhoods
- The requested funding will be invested in **events, programming and infrastructure improvements** that will benefit the host communities
- The applicant is a **registered charity or has a trustee relationship** with a registered charity.

Applications are being accepted until **January 31, 2020**.

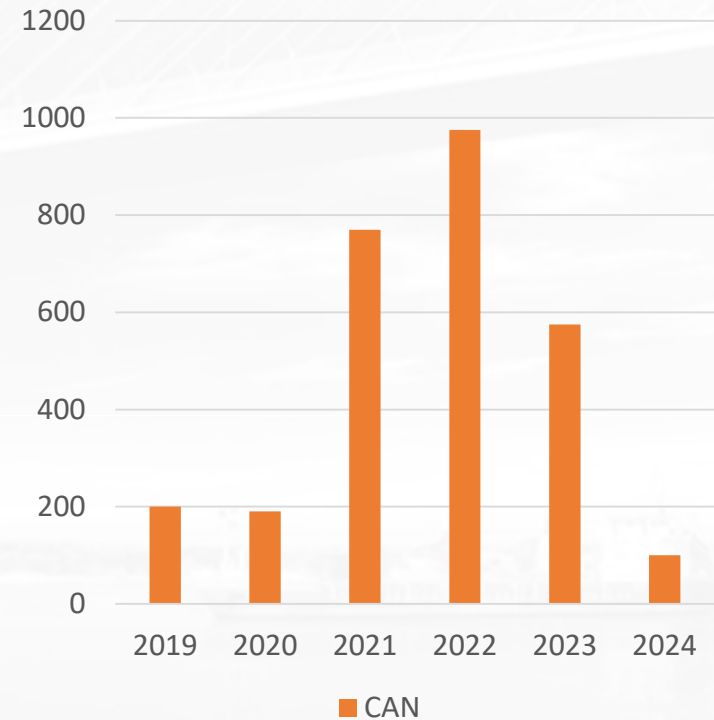


WORKING WITH BNA

Anticipated Workforce Trends:

- Construction and operation of the bridge will bring thousands of jobs to the region.
- Design work is heavy in **2019 – 2020** resulting in limited staffing for trades.
- As design work is completed, construction will ramp up for **2021-2023**.
- Predominantly focused on Operators, Labourers, Ironworkers, Carpenters and Specialty Trades.
- BNA is currently meeting with national and provincial labour associations to review workforce requirements during construction and operation phases.

Anticipated Canadian Workforce



VENDOR SUMMIT OVERVIEW



BRIDGING NORTH AMERICA HIRING & PROCUREMENT



jobs@bnacagp.com



procurement@bnacagp.com

www.GordieHoweInternationalBridge.com

QUESTION AND COMPLAINT PROCESS

The project team is committed to ensuring that communication with the public is maintained during construction so that community concerns are addressed as quickly as possible. Adjacent residents and businesses will receive notifications of upcoming work, regular progress updates and a project contacts to discuss questions and concerns.

Questions and complaints can be addressed to:

- 1-844-322-1773
- info@wdbridge.com
- Visit the Sandwich Community Office: 3201 Sandwich Street

LEARN MORE

 gordiehoweinternationalbridge.com

 1-844-322-1773

 @gordiehowebrg

 @gordiehowebridge

 Gordie Howe Bridge

 @gordiehowebrg

 WDBA-APWD